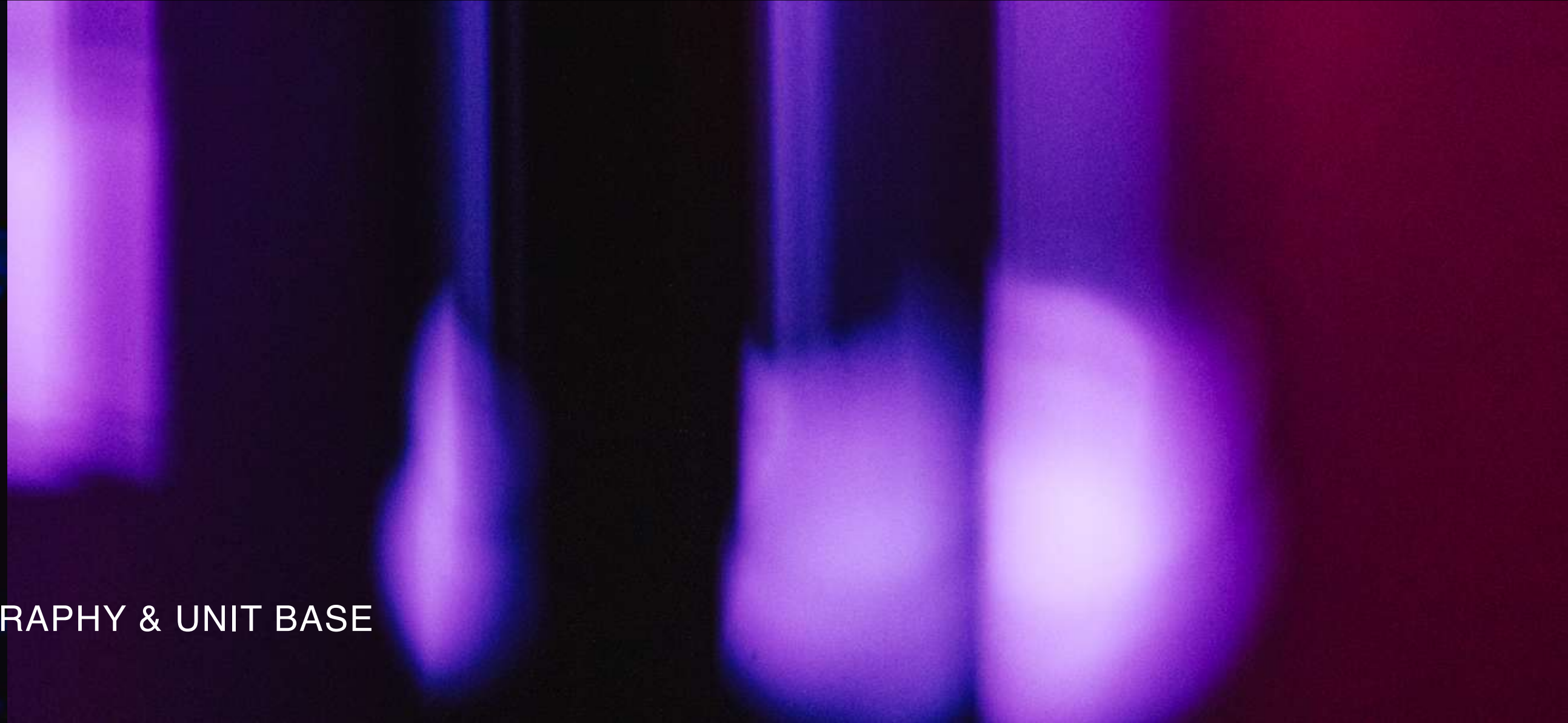





# DRUMSHEDS



FILMING, PHOTOGRAPHY & UNIT BASE





# ABOUT US

Drumsheds offers a filming location like no other.

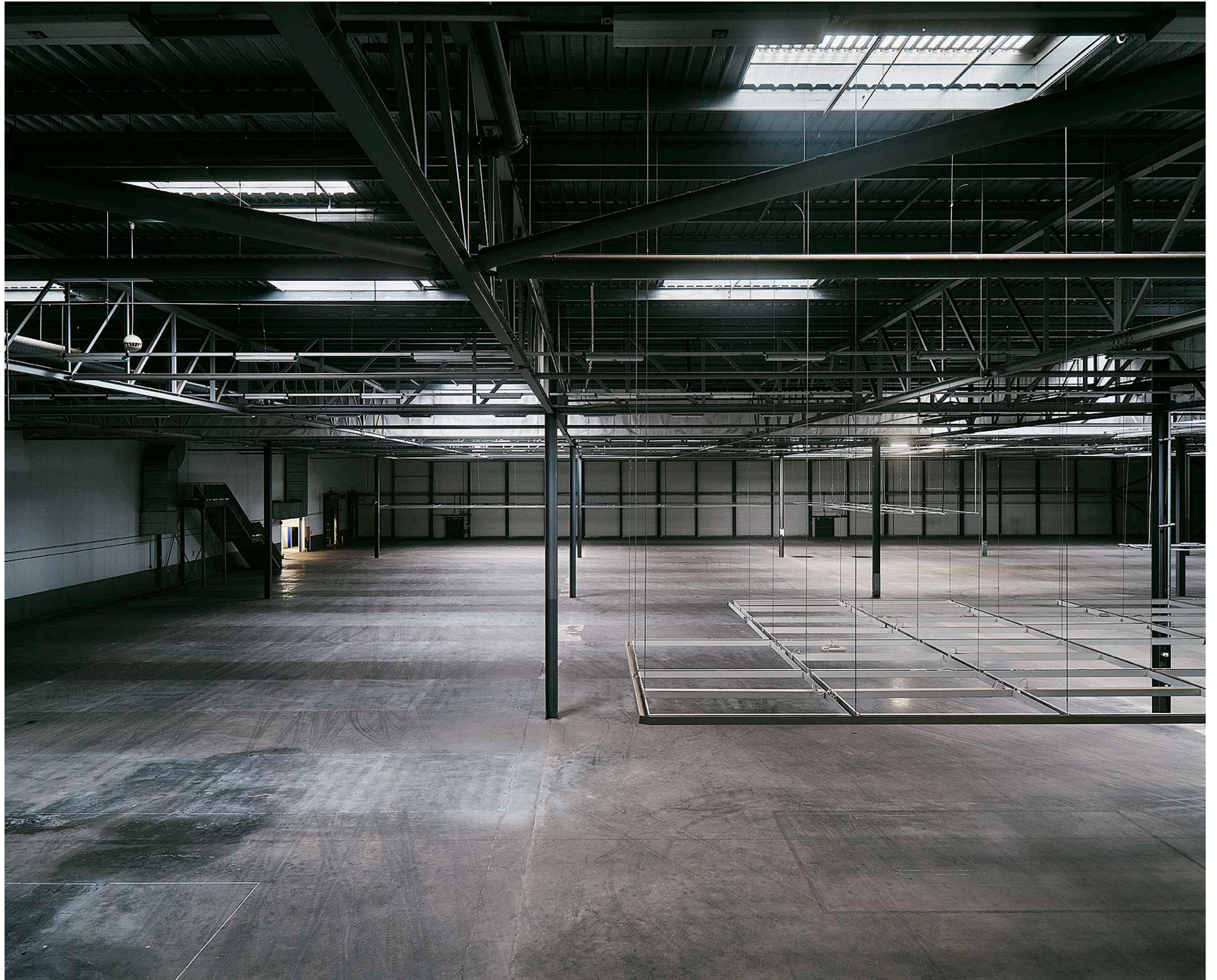
An expansive, industrial venue perfect for music videos, editorial shoots, brand campaigns and cinematic projects. With multiple interlinked spaces, each boasting unique dimensions and atmosphere, it provides the ideal backdrop for capturing striking visuals. The venues raw charm and vast interiors allow for creative freedom.

Drumsheds outdoor areas add versatility to your shoot as well as ample space for on site parking and unit base. Dedicated spaces on site which can be utilised as dressing rooms, productions offices, hair & make up, crew holding and catering.



# ROOM X

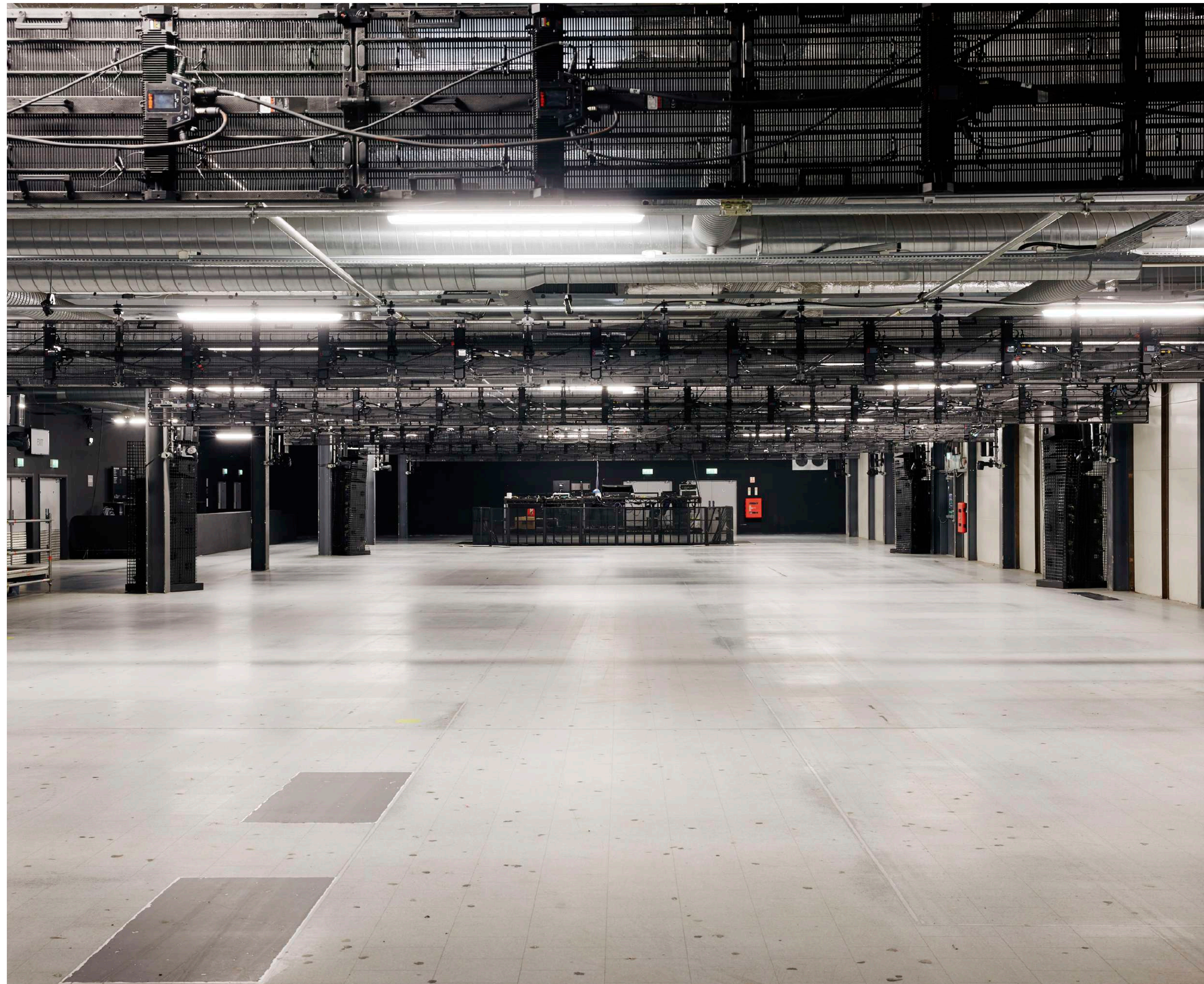
Room X is a filmmaker's dream, offering 8411sqm of unrestricted space. Its towering ceilings not only inspire grand set designs but also facilitate complex lighting setups and aerial shots, perfect for ambitious productions that require a large, unobstructed area.











# ROOM Y

Room Y mirrors the industrial aesthetic of Room X, offering the same raw atmosphere in a more intimate setting. With low ceilings that enhance the energy, it's designed with cutting-edge sound, immersive lighting, and striking visuals.

Ideal for shoots that require controlled sound environments, such as intimate interviews or acoustic performances.

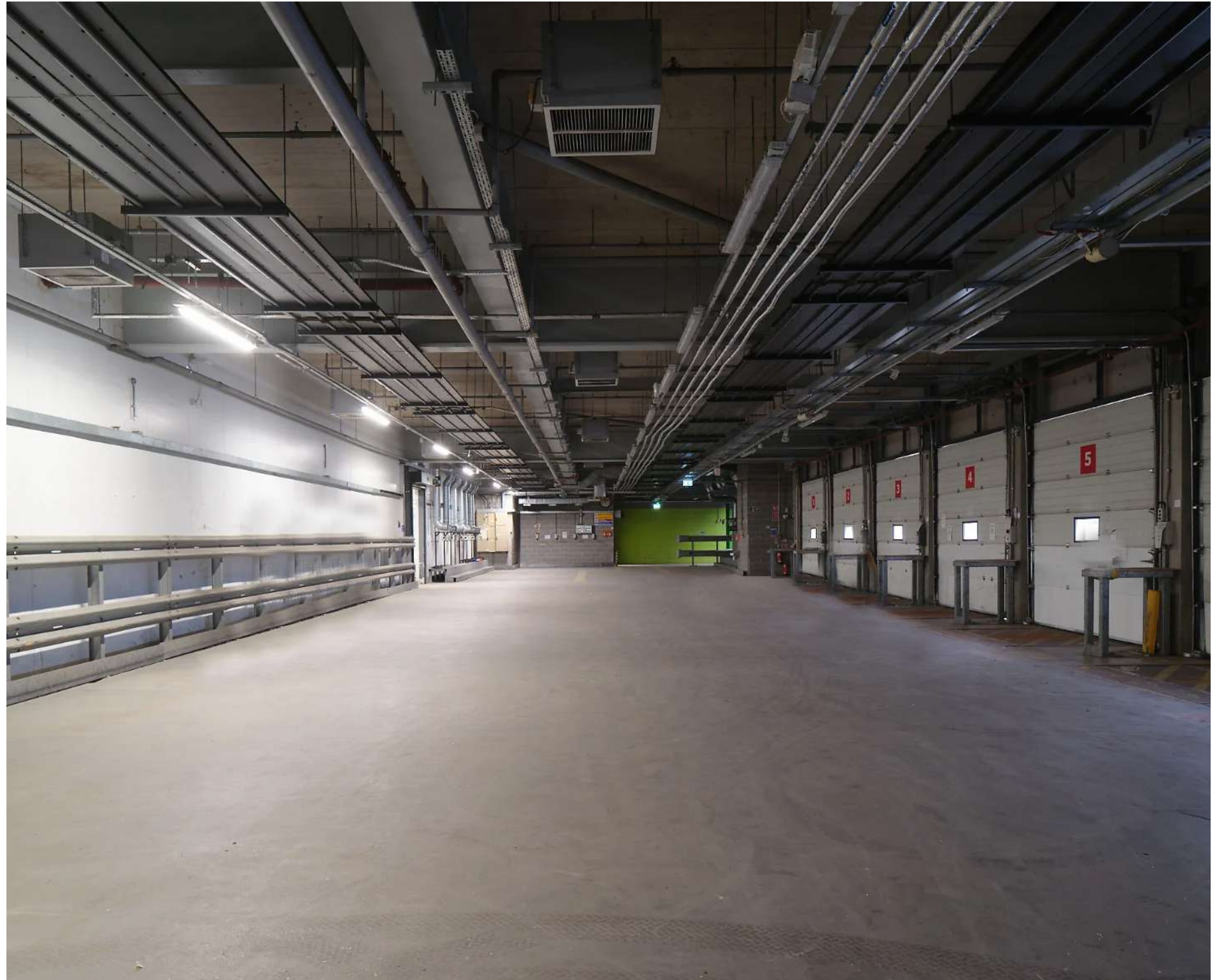






# ROOM Z

For moments that demand a closer perspective, Room Z offers a more intimate setting, perfect for smaller scale shoots that require a personal touch. Linking seamlessly with larger spaces, it's equipped with power and rigging, ideal for exclusive shoots or scenes that cannot be for a focused atmosphere.









# THE STORES



The Stores is a spacious, industrial style area located between our main rooms. Its expansive layout is perfect for fashion and editorial shoots, offering ample room for flow and movement. Also used as a space for crew holding and catering.









# THE GALLERY

The Gallery is situated on the second floor of Drumsheds, offering a private entrance for exclusive access. With adjustable house lighting that accentuates every corner, along with low ceilings and a spacious floor, it provides the perfect setting for dramatic shots. Ideally located on the same floor as our production offices and dressing rooms for added convenience.







# UNIT BASE & EXTERNAL AREAS

Outdoor space is available for unit base, parking and outdoor scenes.

Our onsite team ensures that your base remains private and secure. Overnight holds and multi day hires are also offered.

We can facilitate both parking and unit base as stand alone events if you are using another location nearby to shoot.











# DRESSING ROOMS

Onsite furnished dressing rooms are functional and practical, equipped to handle the logistics of your project with ease are available. They can be utilised as hair & makeup rooms, costume areas, production offices, or meeting rooms. These spaces are also flexible and can be transformed for specific scenes if needed.







# ADDITIONAL SPACES

Various features like escalators, lifts, moving walkway, foyers and screens  
With its vast layout provide multiple settings for different scenes, eliminating the need for additional locations.







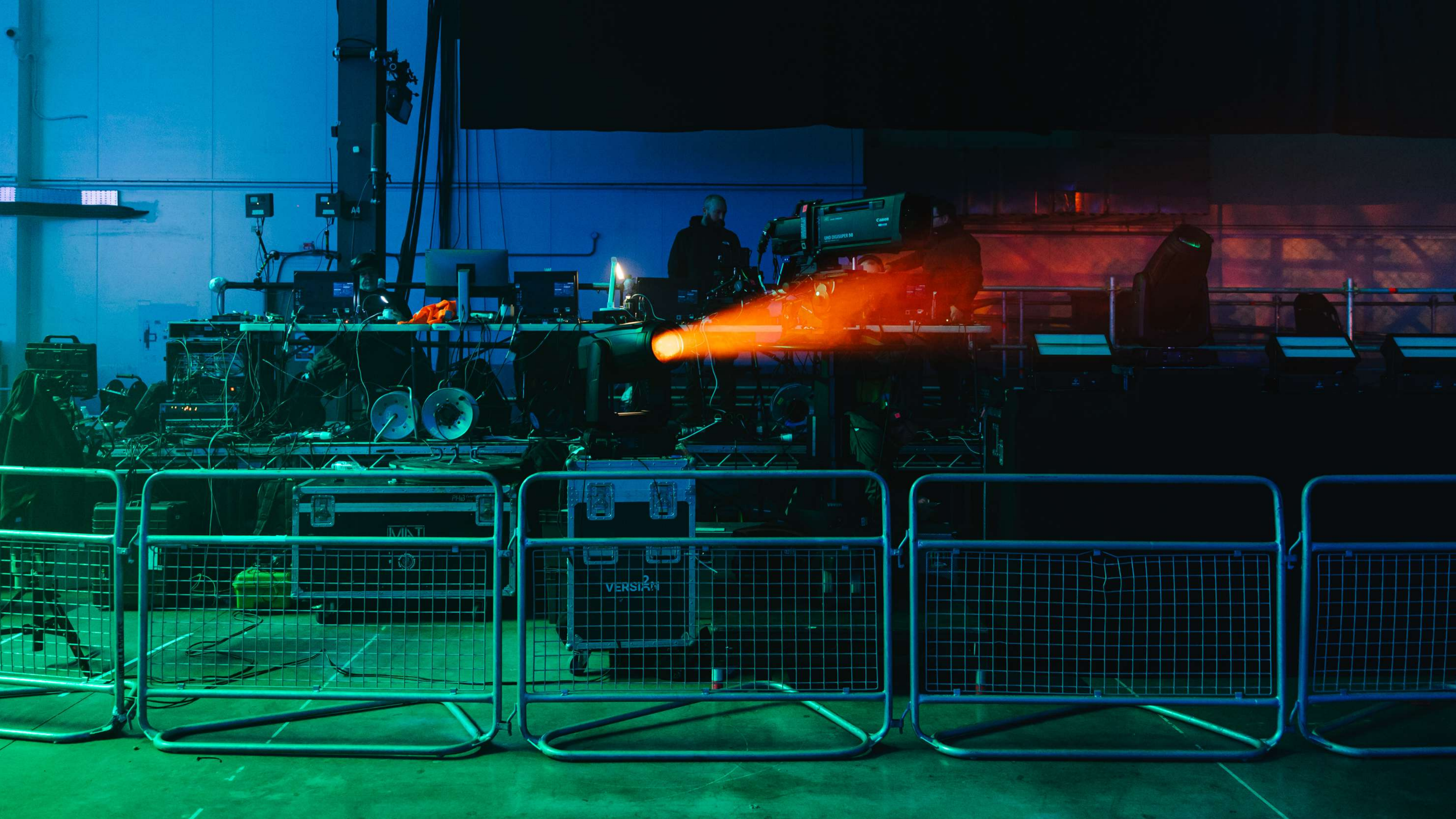


# LOADING BAY



Drumsheds' design prioritises easy access, enabling film crews to effortlessly load and unload equipment for different scenes. This seamless accessibility ensures that every aspect of the shoot can be efficiently arranged, enhancing the overall production experience for cast and crew alike.







# VENUE DETAILS & FACILITIES

## ACCESS TIMES

08:00 - 20:00

(extended hours available on request)

Flexibility to add pre light & strike days where needed, as well as overnight hold

## FEATURES & AMENITIES

High ceilings

Vehicle access

Loading bay

Outdoor space

Unit base

Blackout capabilities

Production parking

Goods lift

Green rooms & production offices

Onsite infrastructure to suit all event sizes

Toilet facilities

In house AV services (subject to event dates)

Marketing collaborations

## SUPPORT FROM THE DRUMSHEDS IN HOUSE TEAM

Our onsite team specialises in planning and executing a variety of large scale activations and film shoots.

We'll collaborate with you to compile a detailed breakdown of event operational costs covering areas such as security, traffic management, building management, event logistics, medical services, cleaning and ticketing.

Our goal is to support you in bringing your vision to life every step of the way.



# SPECIFICATIONS

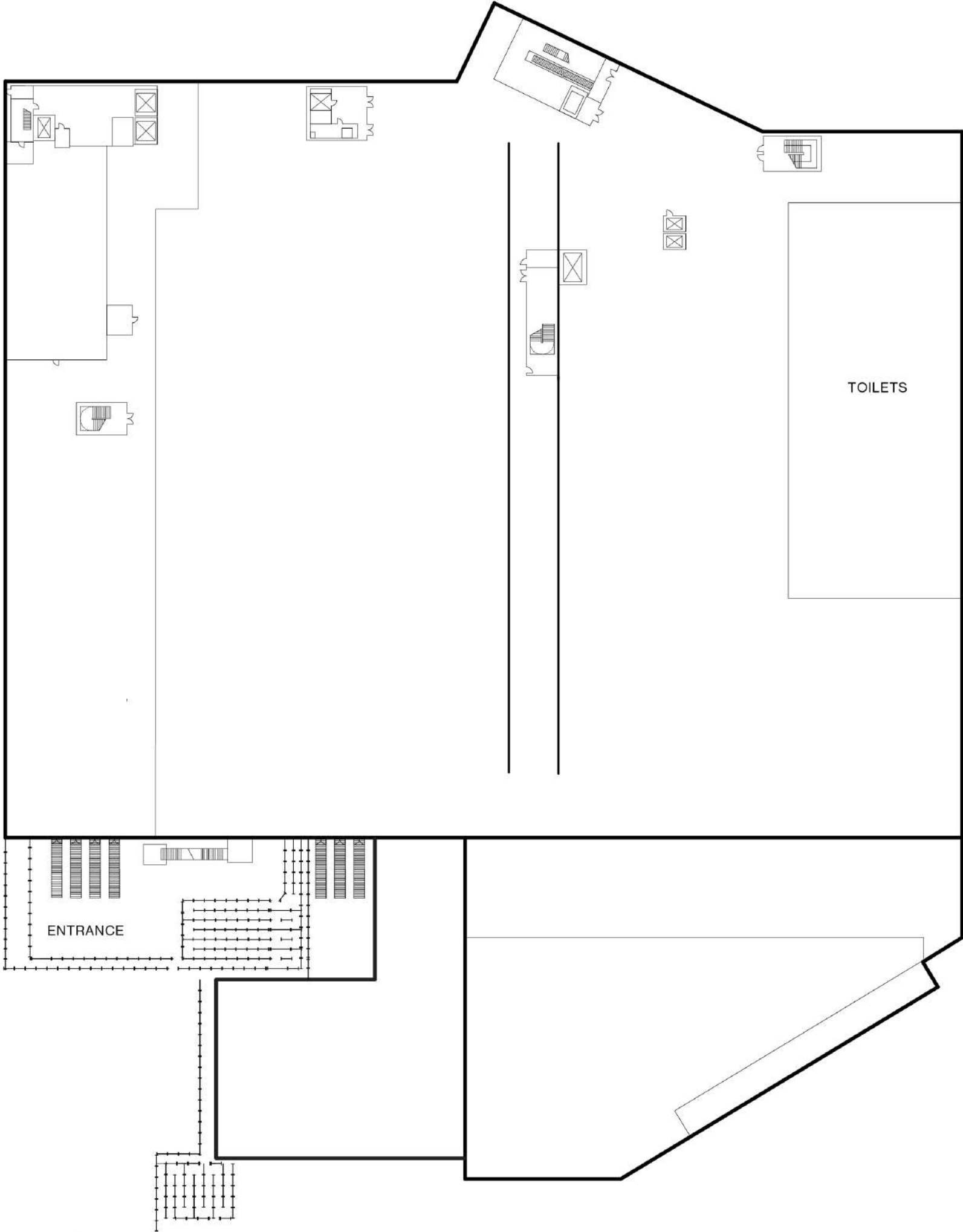
SPACES		DIMENSIONS							
ROOMS	L (M)	W (M)	H (M)	SQ.M	CAPACITY				
X ROOM	95.8	87.8	8	8,411.2	Seating 3,200 theatre style (opt 1) 5,580 theatre style (opt 2) 2,160 cabaret (opt 3)	Standing 3,500 - 10,000	Exhibitions Space for 140 stands (3m x 3m)	Arena 1,700 seated, 4,500 standing	
Y ROOM	86.7	22.6	4.4	1,959.4	Seating 1,750 theatre style (opt 1) 600 cabaret style (opt 2)	Standing 2500	-	-	
Z ROOM	26.4	12.7	-	335	-	Standing 450	-	-	
THE GALLERY	95.9	64.3	3	6,166.3	Seating 5,580 theatre style 2,160 cabaret style (tables of 10)	Standing 3,500	Exhibitions Space for 140 stands (3m x 3m)	-	





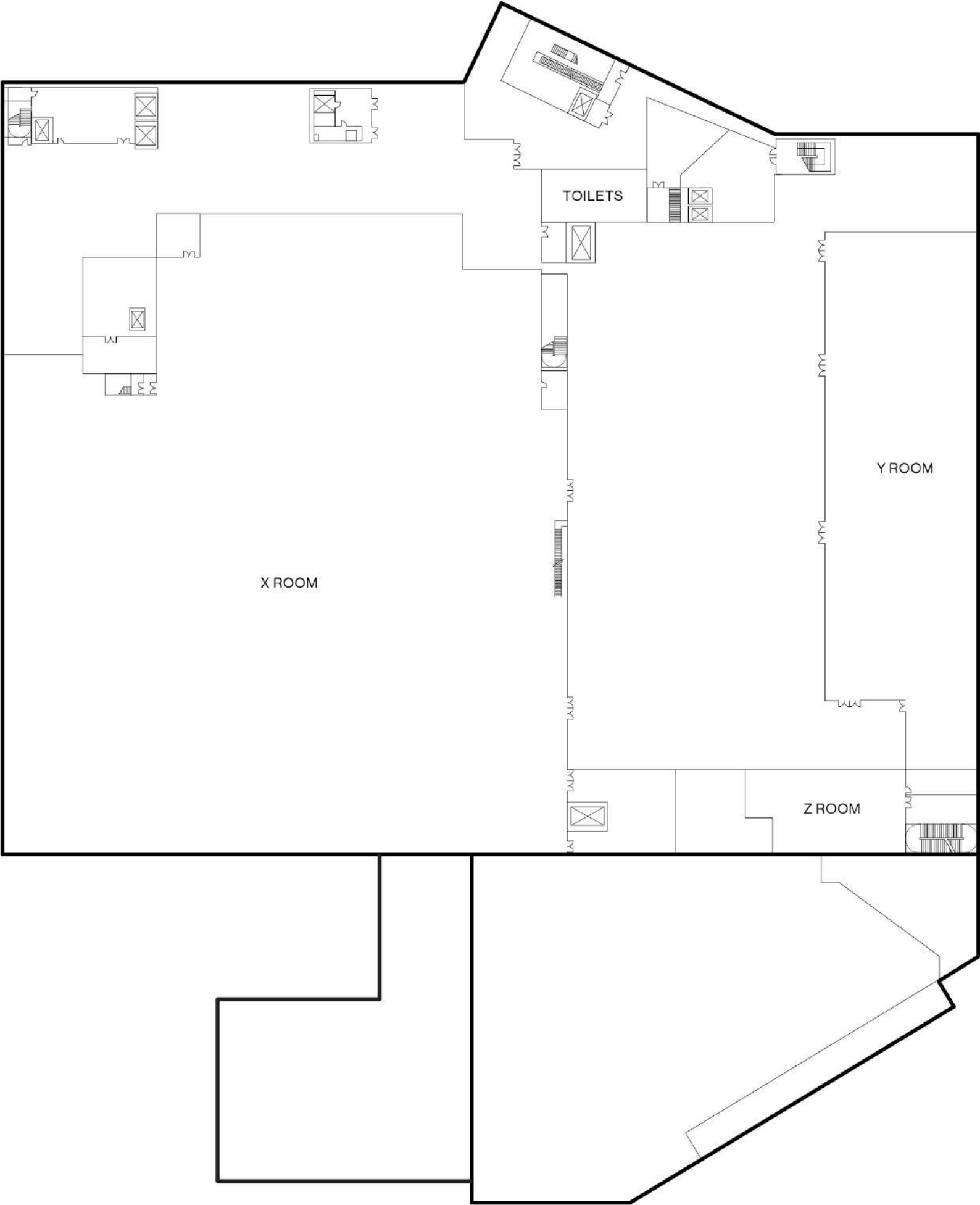


# GROUND FLOOR



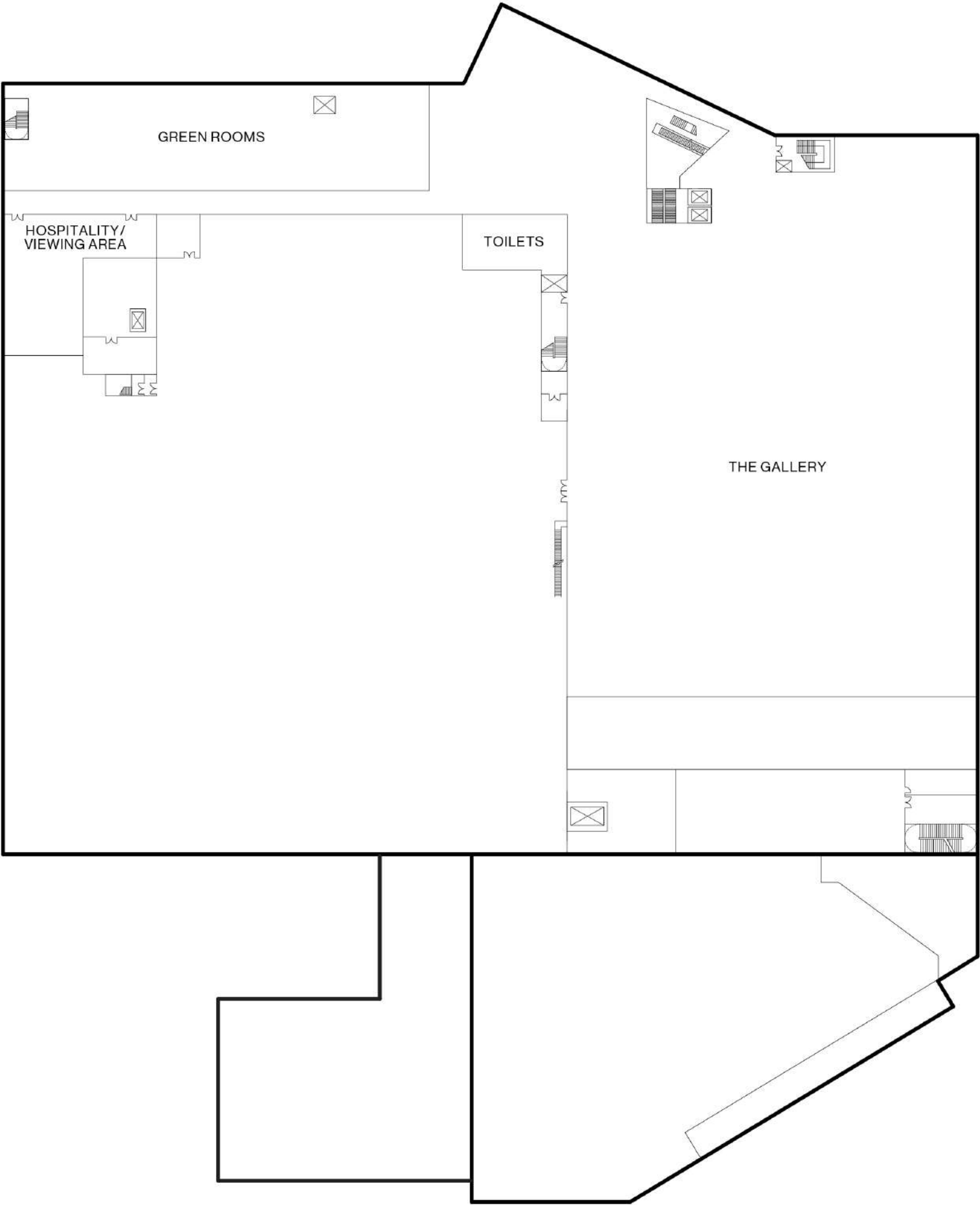


# FIRST FLOOR





SECOND FLOOR





# PARTNERS & SUPPLIERS

## PRODUCTION, RIGGING & POWER

Vibration Production

E: [Spyros.Fasegkas@vibrationproduction.com](mailto:Spyros.Fasegkas@vibrationproduction.com)

T: +447751738878

## PRINT & BRANDING

N2 Display

E: [mick.woodward@n2display.com](mailto:mick.woodward@n2display.com)

T: 01992 440 333

## WIFI

Noba

E: [nick@noba.com](mailto:nick@noba.com)

T: 020 34404 61

## CATERING

KERB

E: [toby@kerbevents.com](mailto:toby@kerbevents.com)

T: 07475 348772

Moving Venue

E: [greatfood@movingvenue.com](mailto:greatfood@movingvenue.com)

T: 020 8038 8783

Jimmy Garcia

E: [events@jimmygarciacatering.com](mailto:events@jimmygarciacatering.com)

T: 020 7998 3676

## TICKETING

Kaboodle

E: [nico.stanford@kaboodle.com](mailto:nico.stanford@kaboodle.com)

T: 07466 954009



# GETTING HERE

## LOCATION

Drumsheds is located in N18, Tottenham

## ADDRESS

6 Glover DR, London N18 3HF

## SHUTTLE SERVICES + RAIL

Nearest station is Meridian Water which is serviced by trains from Stratford & Liverpool Street

Our team can support in providing a convenient shuttle bus service to and from Tottenham Hale

Outdoor space to activate taxi pick up and drop off

## BUS

Bus routes **192** running from Tottenham Hale and **341** running from Waterloo station stop near the venue.

## AIRPORTS

City Airport (28 minutes drive)  
London Stansted Airport (36 minutes)  
Heathrow Airport (1 hour drive)



**WANT TO GET IN  
TOUCH?**

HIRE@DRUMSHEDSLONDON.CO  
M  
DRUMSHEDSLONDON.COM  
6 GLOVER DR, LONDON N18 3HF

INSTAGRAM  
LINKEDIN  
FACEBOOK