

# DRUMSHEDS

EXHIBITIONS & CONFERENCES





# ABOUT US

Enter Drumsheds and you are immersed in a space where functionality converges with visionary design. Spread across four spaces, this 56,485sqm area is a testament to adaptability; ready to be configured to the narrative of your brand's unveiling.

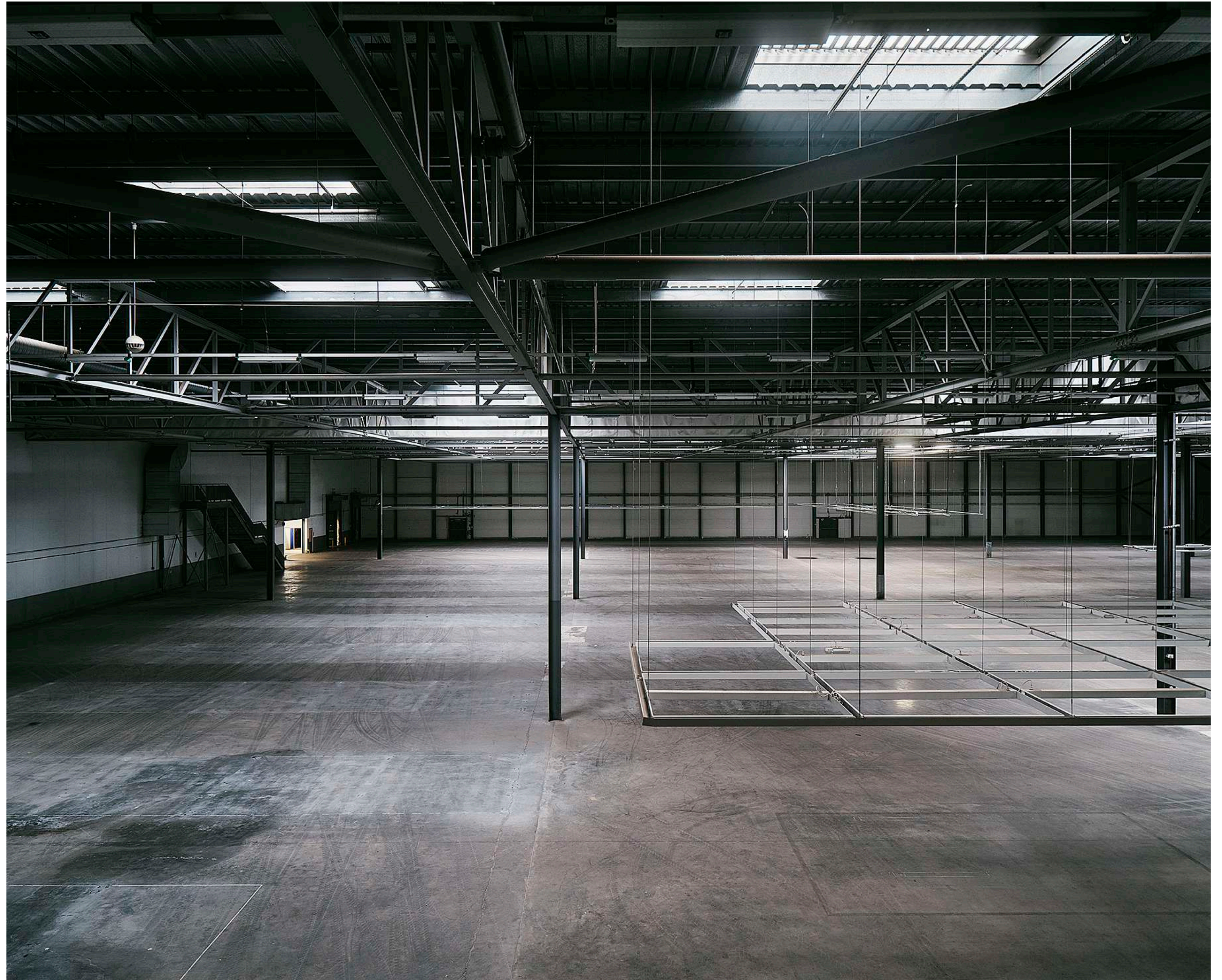
The design of Drumsheds champions a modular approach, allowing you to tailor the space to the exact scale of your event. Whether you require a compact area for a focused symposium or an expansive hall for a major industry exhibition, the venue's divisible nature means you only occupy and pay for the space you need. This flexibility ensures that Drumsheds is the ideal partner for events of any size, enabling organisers to craft an environment that fits their specific vision without the excess of unused areas.



# ROOM X

Room X at Drumsheds, spanning a vast 109,813 square feet, is ideal for large scale conferences and exhibitions. With high ceilings perfect for elaborate setups and aerial camera work, it transforms effortlessly from a tech conference hub to an industry trade show.

This adaptable space can serve as an auditorium, panel discussion theatre, or a showcase for cutting-edge exhibits. It's equipped to support ambitious displays and interactive booths, making it a prime choice for events seeking to captivate and network, truly embodying the heart of any significant event at Drumsheds.











# ROOM Y

Room Y can accommodate a capacity of up to 2500. Slightly smaller boundaries, same raw, industrial feel.

The space boasts a flexible layout and a range of facilities, including a stage, PA system, power and rigging systems.

Room Y's controlled sound environment also makes it ideal for showcasing multimedia presentations or hosting press conferences where every statement is crystal clear. The versatility of Room Y lies in its ability to transform into a dynamic learning space for educational conferences, a quiet room for delicate negotiations, or a serene gallery for audio-visual exhibits.



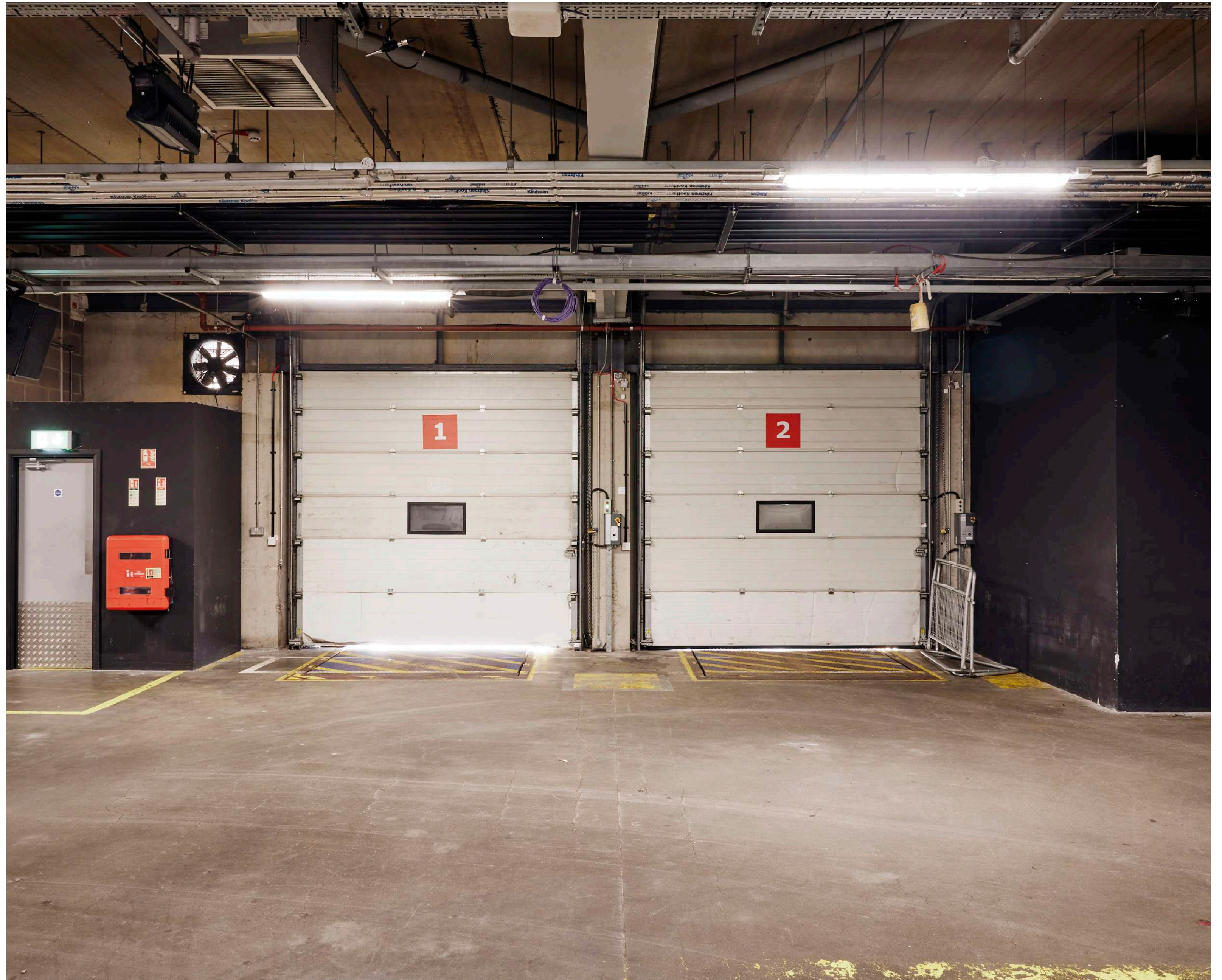




# ROOM Z

Room Z is all about active engagement, with a capacity of 450. Imagine testing performance features, exploring hidden tech secrets or discussing design choices in an interactive environment.

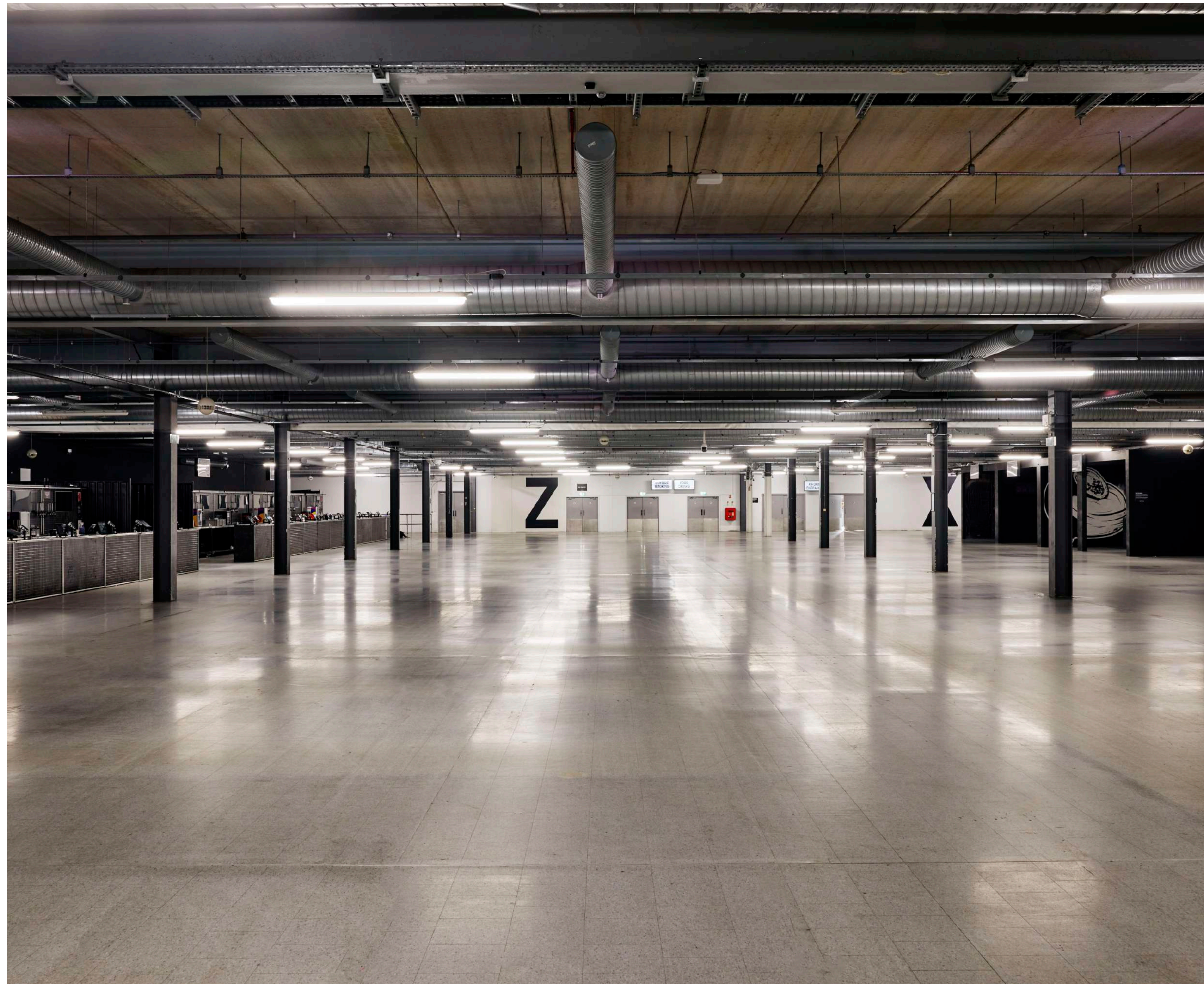
Equipped with comprehensive power and rigging systems, the Room Z is adept at creating immersive ambiances for niche gaming sessions, media events, or creative content production, ensuring every gathering is both intimate and unforgettable.











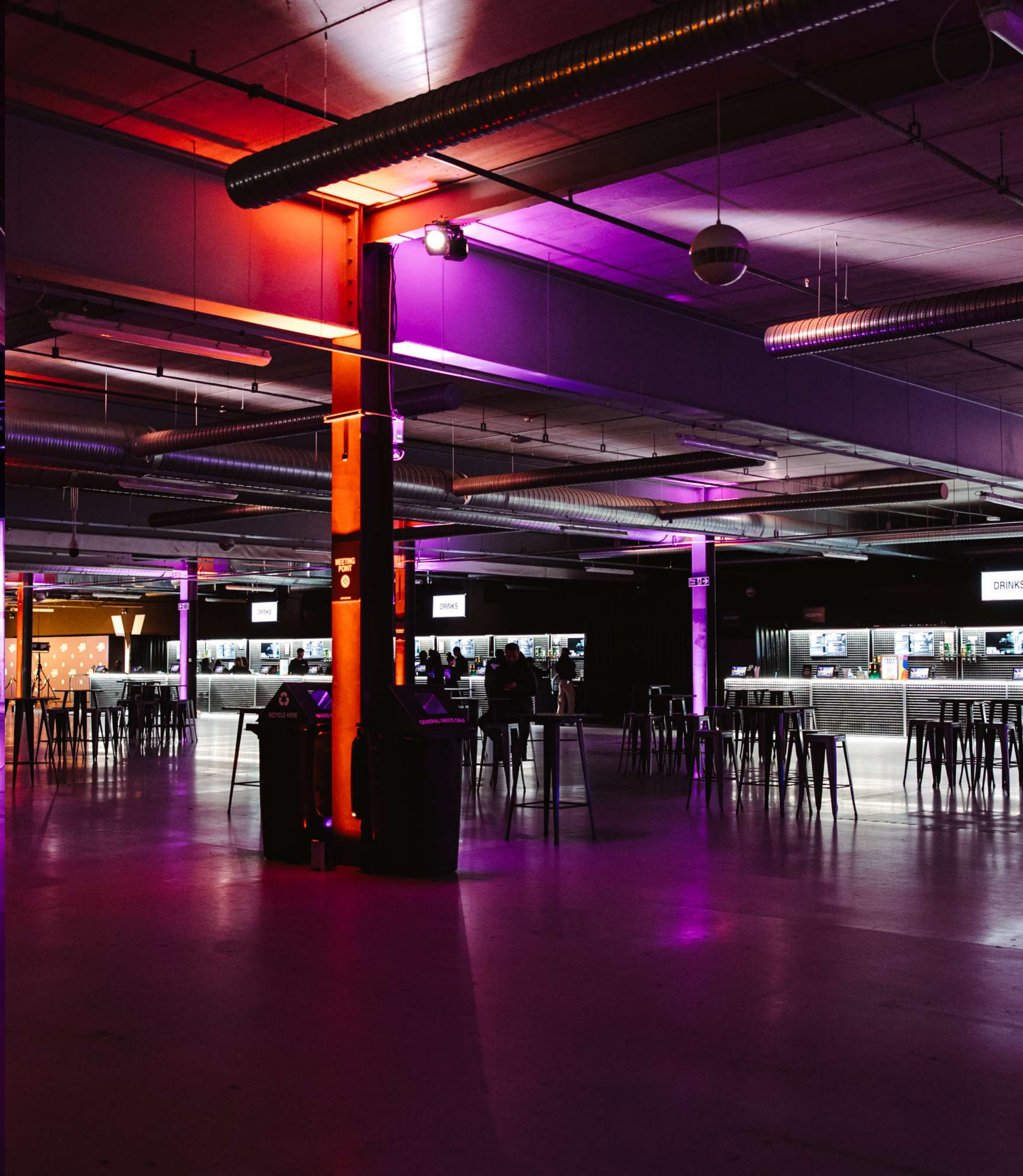
# THE STORES

The Stores acts as a central connection point between Rooms X, Y, Z and The Yard.

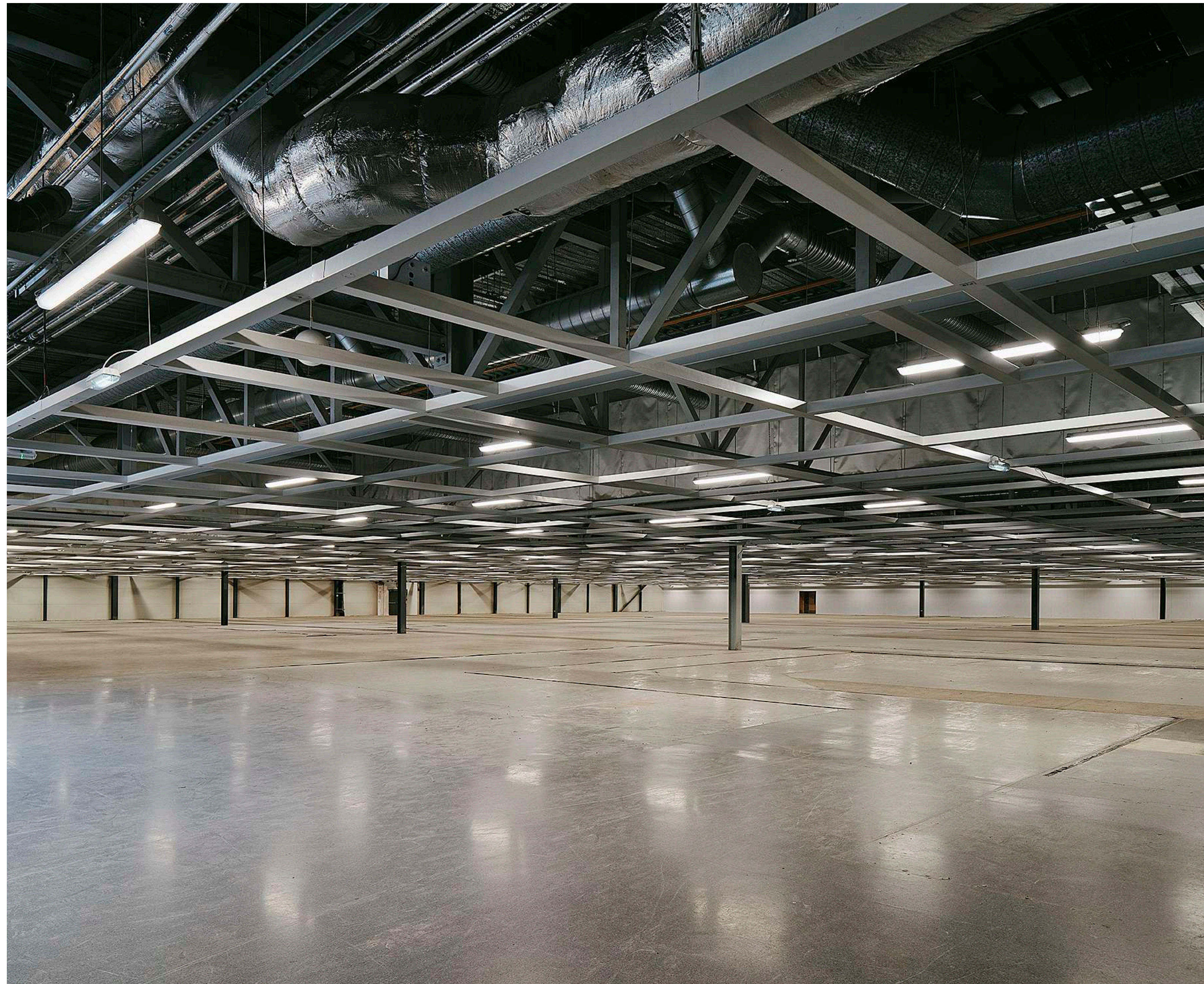
This versatile area is perfect for hosting exhibition stands, catering, drinks receptions or as a place for guests to mingle during events.

The Stores can be transformed into a social hub, offering a unique space for attendees to gather between sessions or enjoy refreshments.









# THE GALLERY

A large 3500 capacity area located on the second level of Drumsheds.

Elevate your launch with an expansive space. It's designed for major reveals that aim to make a lasting impression.

The Gallery comes with it's own private entrance for standalone events but also works well as an addition to Rooms X, Y & Z.



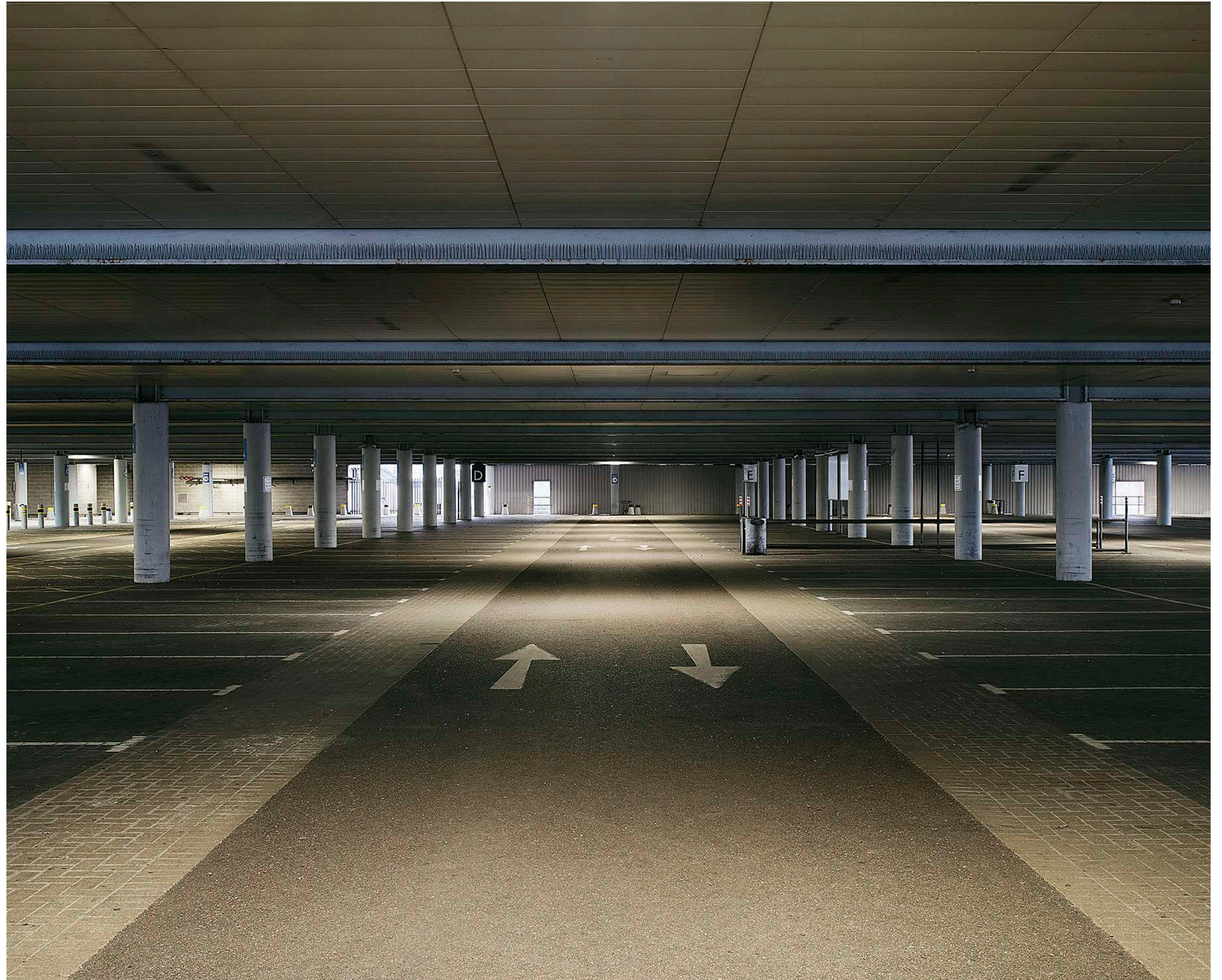




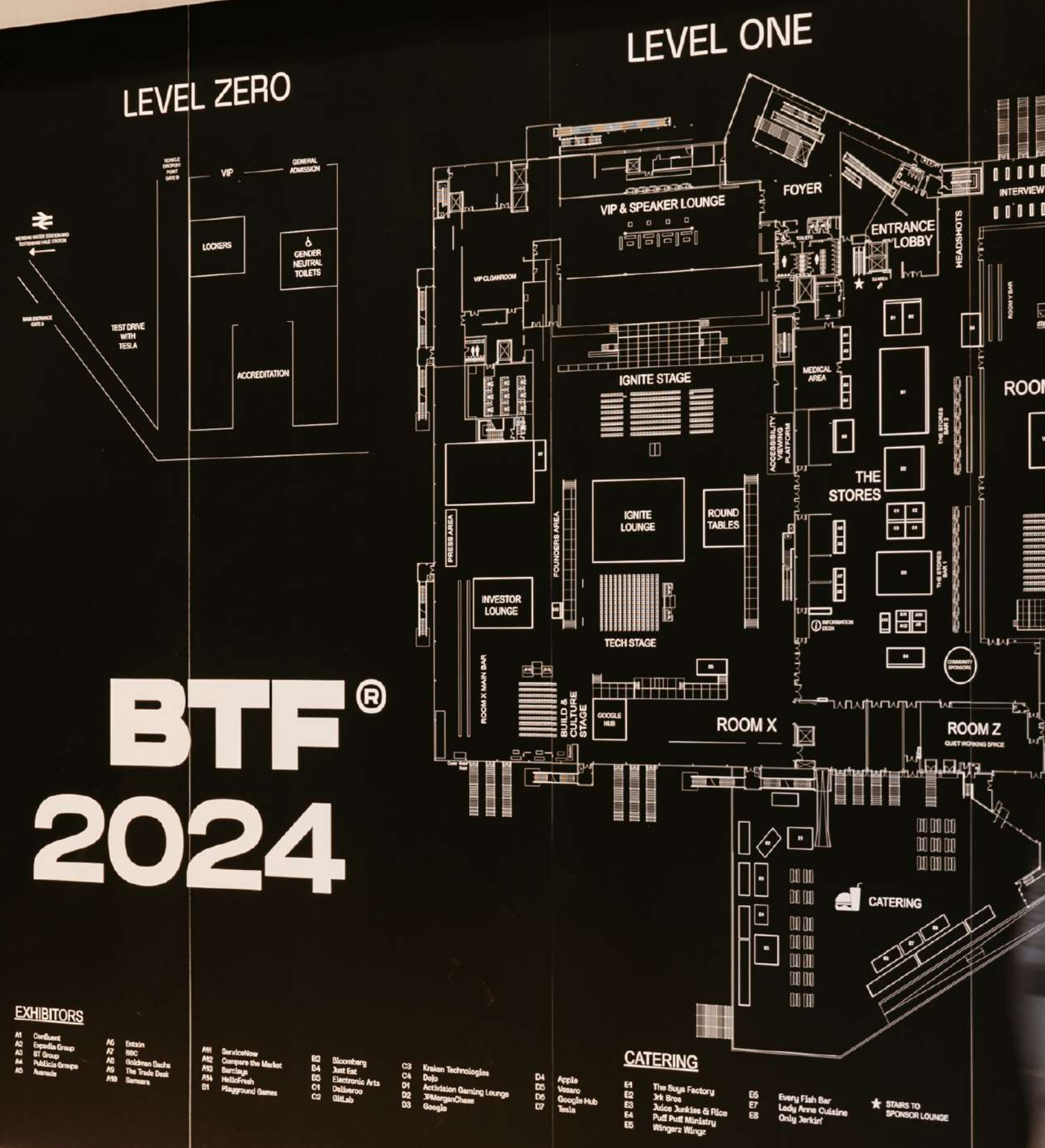
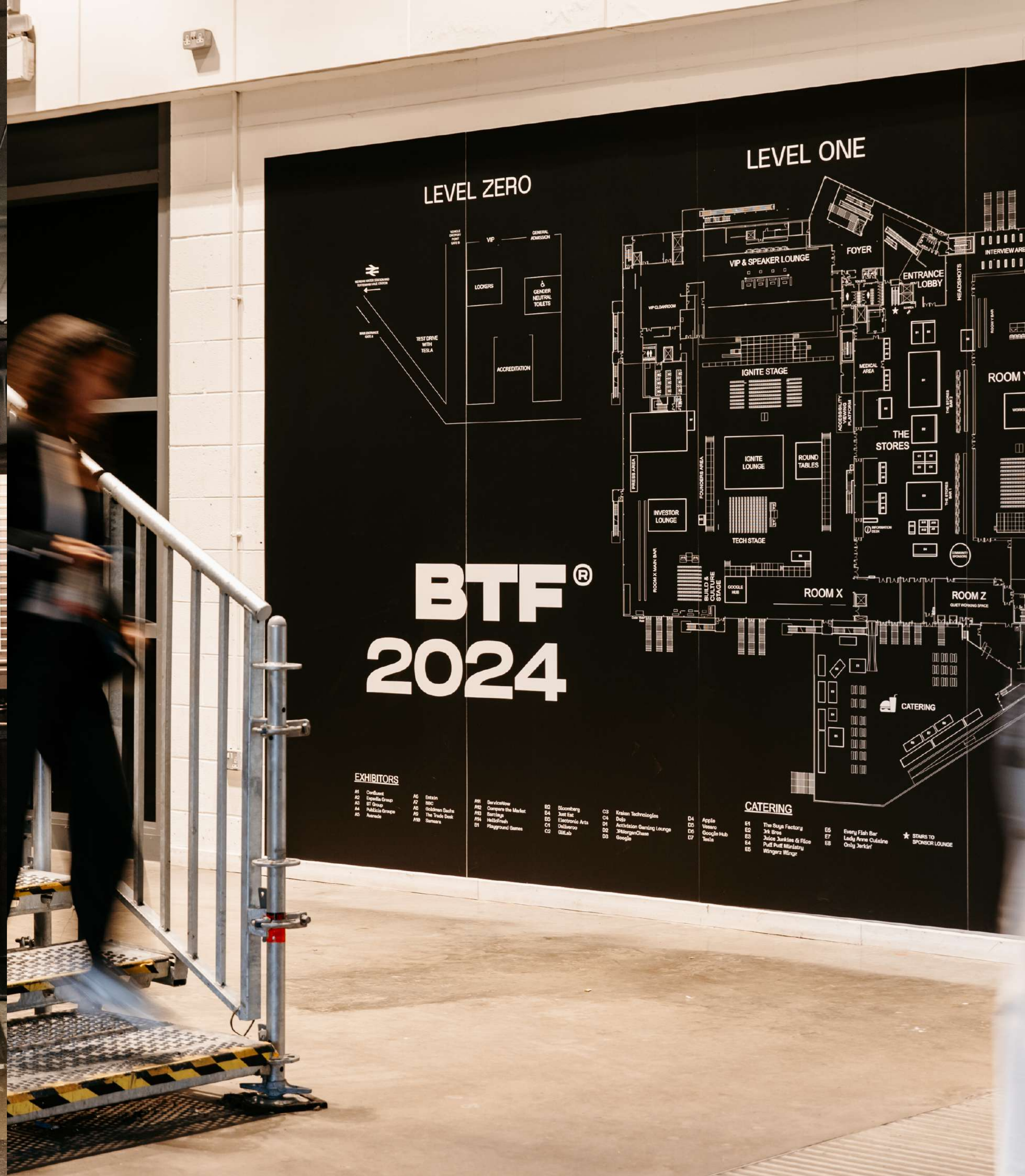
# GROUND LEVEL

Your customer journey starts here. The Ground Level at Drumsheds provides a versatile, weatherproof space.

This space is designed to welcome large crowds with ease, perfect for guest arrivals, registration, and accreditation. With ample room for branding and activations, it sets the stage for an exciting and memorable conference or exhibition experience.









# THE YARD

The Yard is a versatile outdoor events space with direct access to the venue's interior, perfect for summer exhibitions, street food markets, test driving, large vehicle exhibitions and more.

Its adaptability goes beyond just events, it can also serve as a base for productions, provide parking for large events and accommodate the storage of heavy goods or equipment.









# BACKSTAGE

Our backstage area features a private entrance accessed via the moving walkway, complete with car drop off and parking facilities. It's the ideal space to add a VIP touch to your event, offering ample room for press walls, step and repeat displays, or meet and greet setups.











# DRESSING ROOMS

Our dressing rooms serve as a haven for artists. These rooms provide the ideal backstage sanctuary. Also great as production offices and crew holding.

Elevate your presence and embrace the spotlight with Drumsheds' distinctive style and thoughtful amenities.







# ADDITIONAL SPACES

Various features like escalators, lifts, moving walkway, foyers and screens are all designed to enhance the guest experience and enhance the visual impact of your event and create space for branding and sponsorship.









# VENUE DETAILS & FACILITIES

## ACCESS TIMES

08:00 - 00:00

(extended hours available on request)

Flexibility to add build & de-rig days where needed, as well as overnight hold

## FEATURES & AMENITIES

High ceilings

Vehicle access

Loading bay

Outdoor space

Blackout capabilities

Production parking

Goods lift

Green rooms & production offices

Onsite infrastructure to suit all event sizes

Toilet facilities

In house AV services (subject to event dates)

Marketing collaborations

## SUPPORT FROM THE DRUMSHEDS IN HOUSE TEAM

Our onsite team specialises in planning and executing a variety of events from large scale activations to film shoots.

We'll collaborate with you to compile a detailed breakdown of event operational costs covering areas such as security, traffic management, building management, event logistics, medical services, cleaning and ticketing.

Our goal is to support you in bringing your vision to life every step of the way.

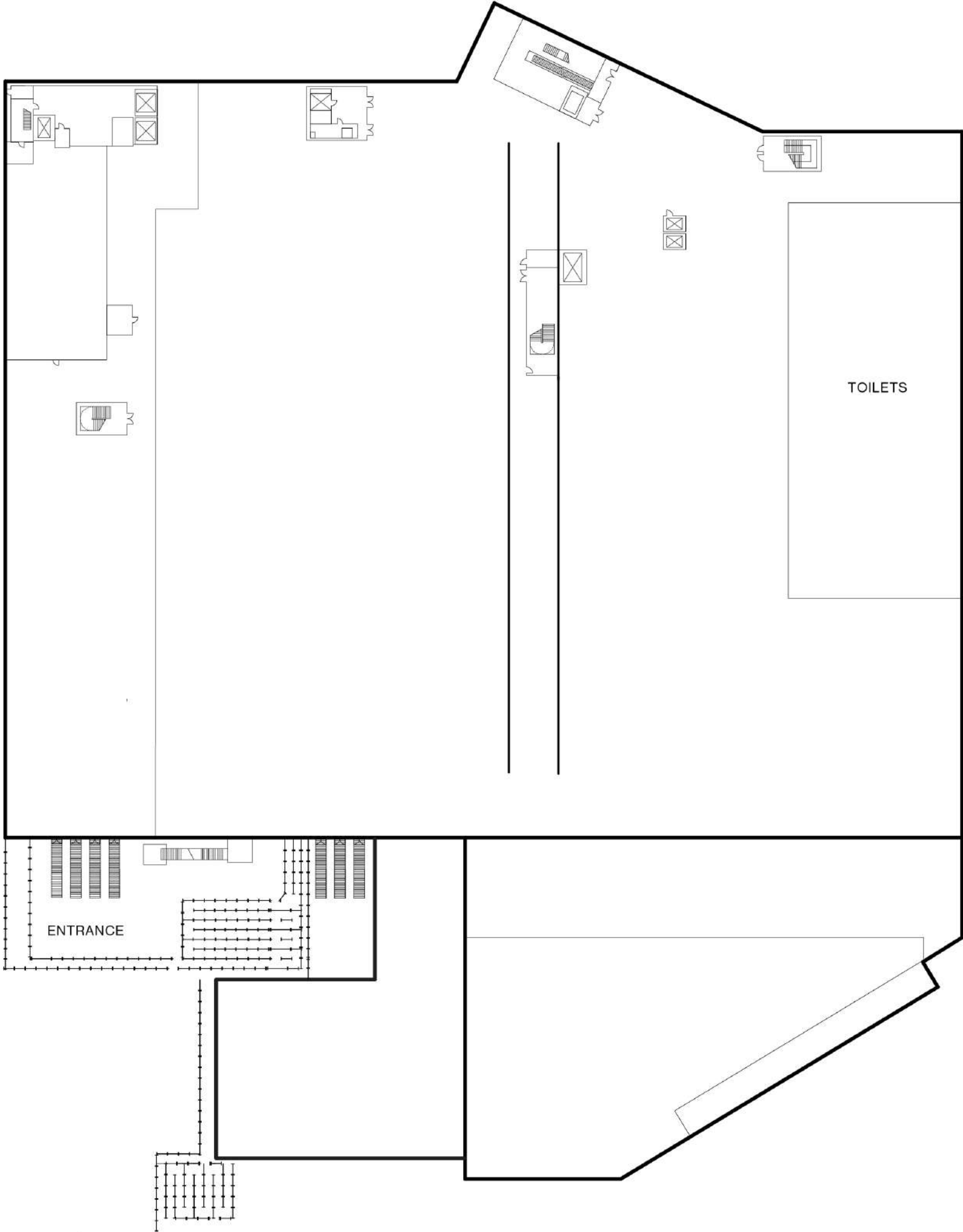


# SPECIFICATIONS

SPACES		DIMENSIONS							
ROOMS	L (M)	W (M)	H (M)	SQ.M	CAPACITY				
X ROOM	95.8	87.8	8	8,411.2	Seating 3,200 theatre style (opt 1) 5,580 theatre style (opt 2) 2,160 cabaret (opt 3)	Standing 3,500 - 10,000	Exhibitions Space for 140 stands (3m x 3m)	Arena 1,700 seated, 4,500 standing	
Y ROOM	86.7	22.6	4.4	1,959.4	Seating 1,750 theatre style (opt 1) 600 cabaret style (opt 2)	Standing 2500	-	-	
Z ROOM	26.4	12.7	-	335	-	Standing 450	-	-	
THE GALLERY	95.9	64.3	3	6,166.3	Seating 5,580 theatre style 2,160 cabaret style (tables of 10)	Standing 3,500	Exhibitions Space for 140 stands (3m x 3m)	-	

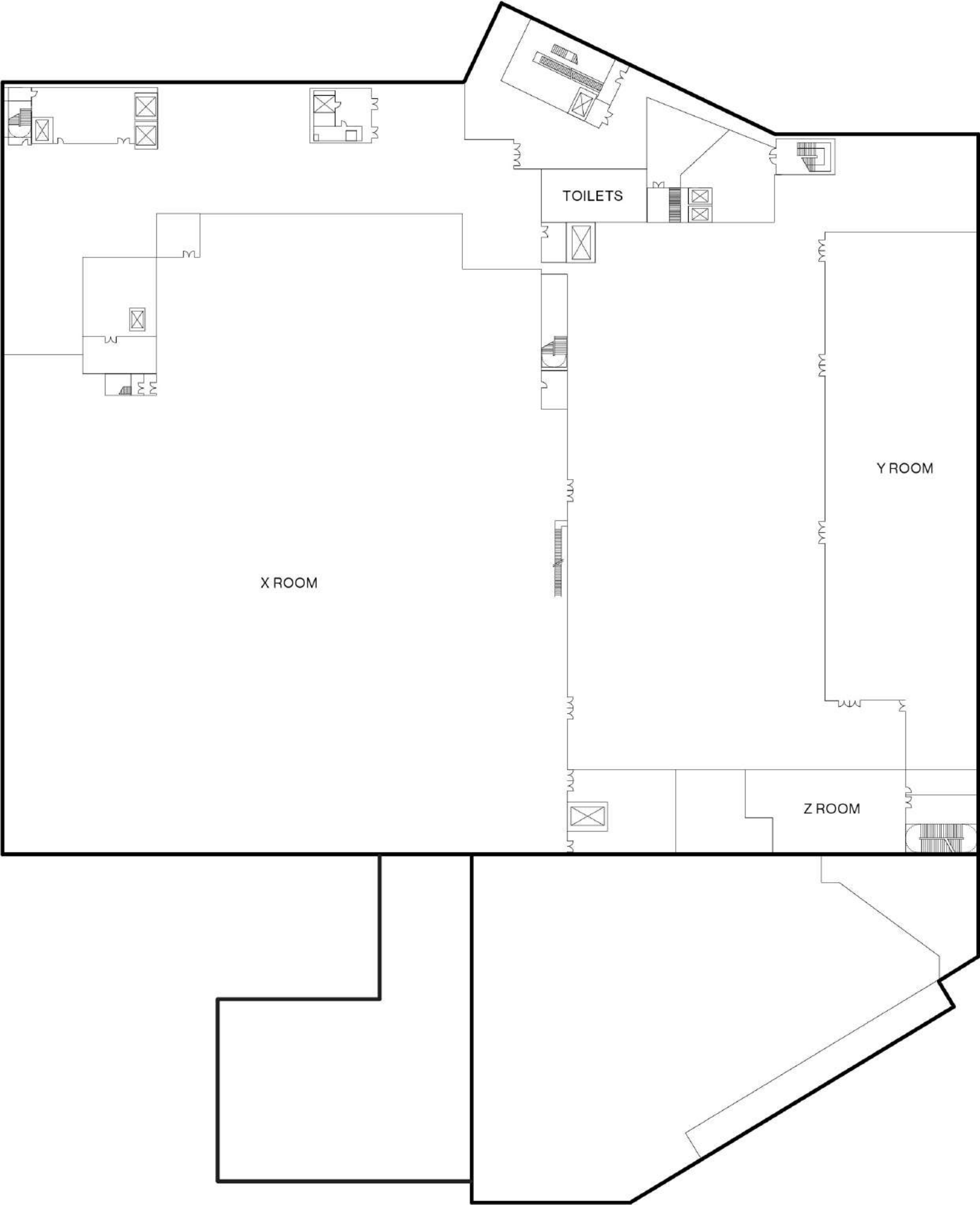


# GROUND FLOOR



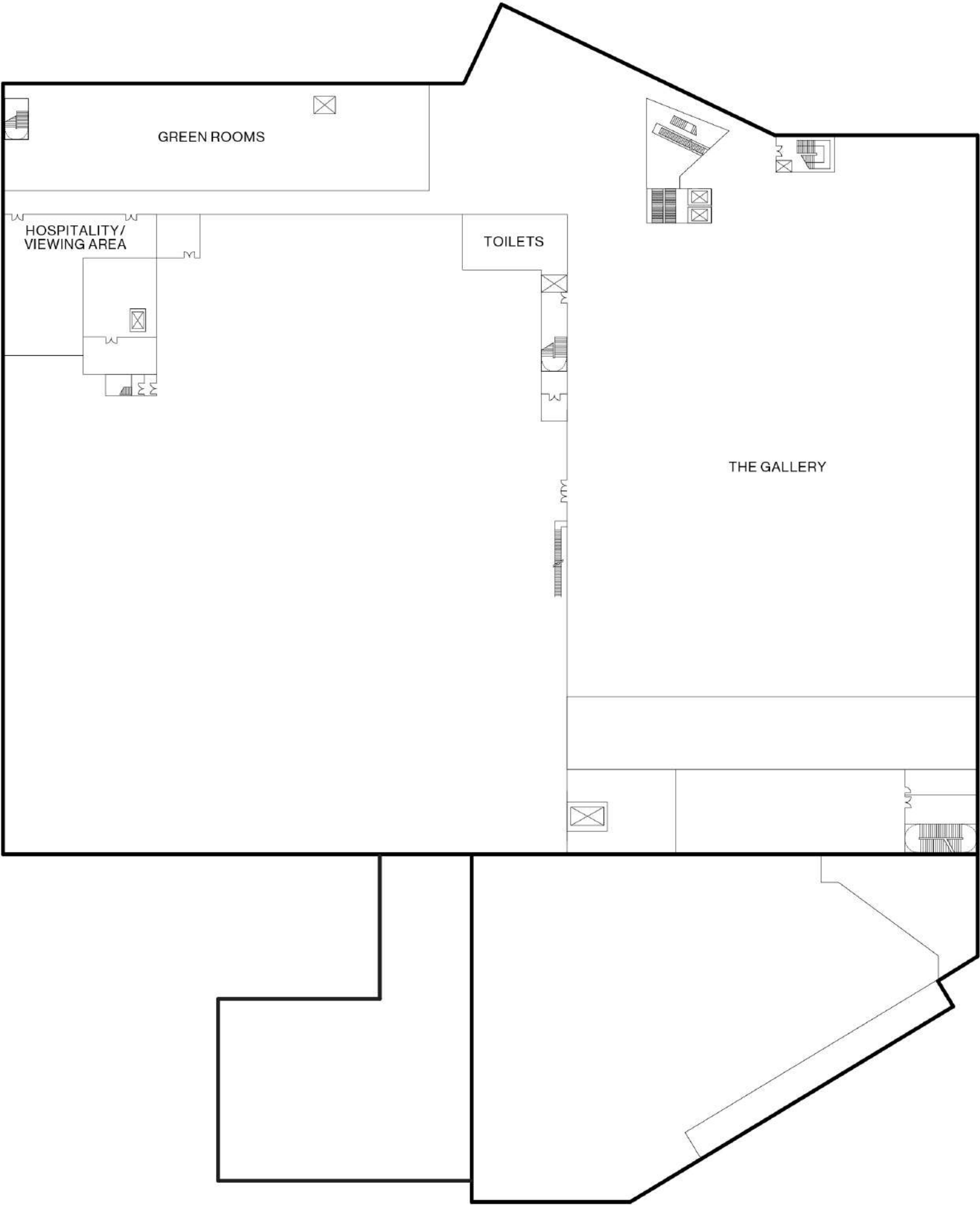


# FIRST FLOOR





SECOND FLOOR





# PARTNERS & SUPPLIERS

## PRODUCTION, RIGGING & POWER

Vibration Production

E: [Spyros.Fasegkas@vibrationproduction.com](mailto:Spyros.Fasegkas@vibrationproduction.com)

T: +447751738878

## PRINT & BRANDING

N2 Display

E: [mick.woodward@n2display.com](mailto:mick.woodward@n2display.com)

T: 01992 440 333

## WIFI

Noba

E: [nick@noba.com](mailto:nick@noba.com)

T: 020 34404 61

## CATERING

KERB

E: [toby@kerbevents.com](mailto:toby@kerbevents.com)

T: 07475 348772

Moving Venue

E: [greatfood@movingvenue.com](mailto:greatfood@movingvenue.com)

T: 020 8038 8783

Jimmy Garcia

E: [events@jimmygarciacatering.com](mailto:events@jimmygarciacatering.com)

T: 020 7998 3676

## TICKETING

Kaboodle

E: [nico.stanford@kaboodle.com](mailto:nico.stanford@kaboodle.com)

T: 07466 954009



# GETTING HERE

## LOCATION

Drumsheds is located in N18, Tottenham

## ADDRESS

6 Glover DR, London N18 3HF

## SHUTTLE SERVICES + RAIL

Nearest station is Meridian Water which is serviced by trains from Stratford & Liverpool Street

Our team can support in providing a convenient shuttle bus service to and from Tottenham Hale

Outdoor space to activate taxi pick up and drop off

## BUS

Bus routes **192** running from Tottenham Hale and **341** running from Waterloo station stop near the venue.

## AIRPORTS

City Airport (28 minutes drive)  
London Stansted Airport (36 minutes)  
Heathrow Airport (1 hour drive)



**WANT TO GET IN  
TOUCH?**

HIRE@DRUMSHEDSLONDON.COM  
DRUMSHEDSLONDON.COM  
6 GLOVER DR, LONDON N18 3HF

INSTAGRAM  
LINKEDIN  
FACEBOOK