



# DRUMSHEDS

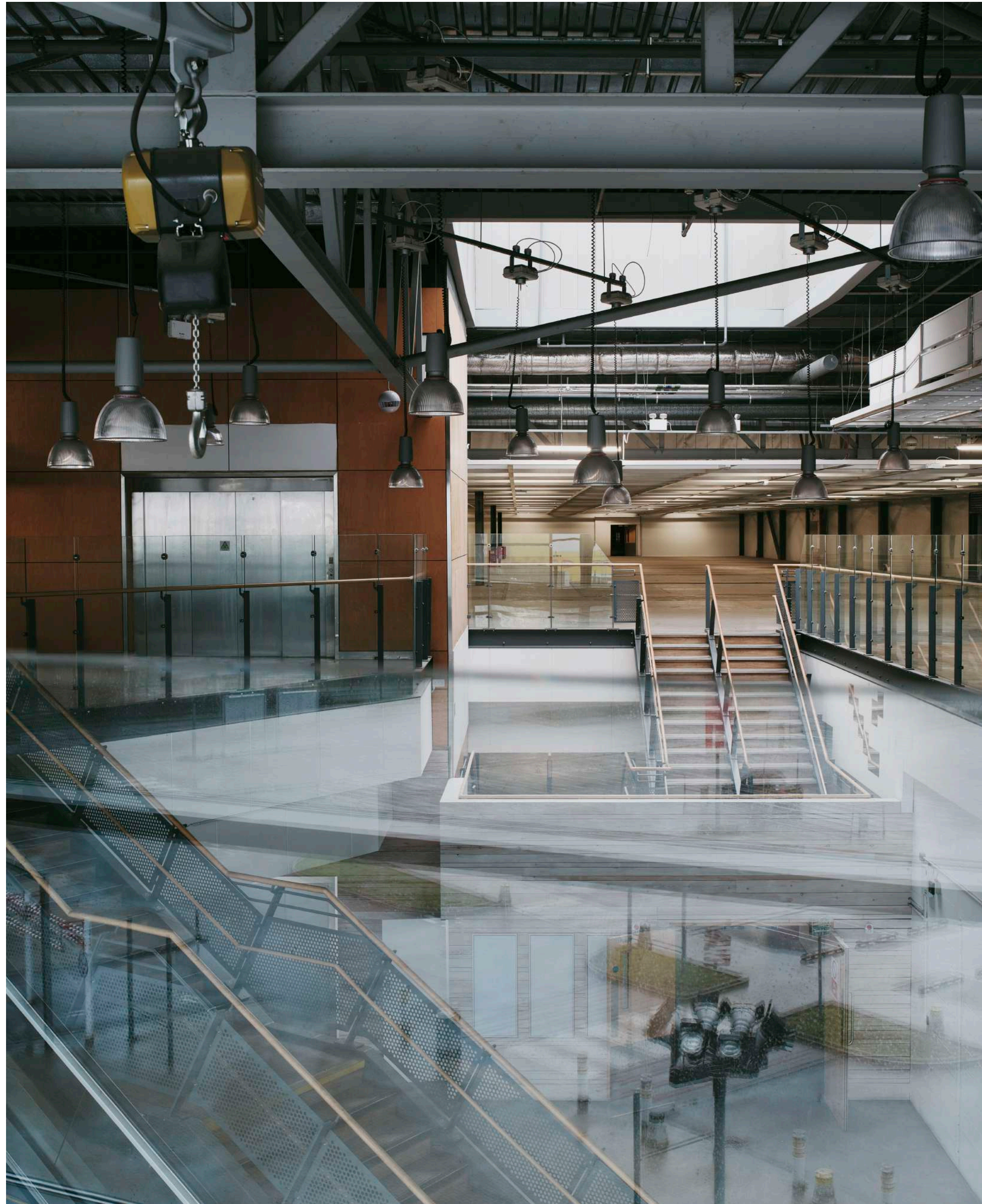


# UNCONFINED SPACE, LIMITLESS POSSIBILITIES

DRUMSHEDS DOES CULTURE DIFFERENTLY. THE LARGEST AND MOST DIVERSE DESTINATION OF ITS KIND IN LONDON. A RARE, SPRAWLING WAREHOUSE IN N18. MODULAR SPACES ACCOMMODATE INTIMATE GATHERING TO GRAND EVENTS, NO NEED TO RENT THE ENTIRETY; WE FLEX TO FIT YOUR SCALE.

# ABOUT US



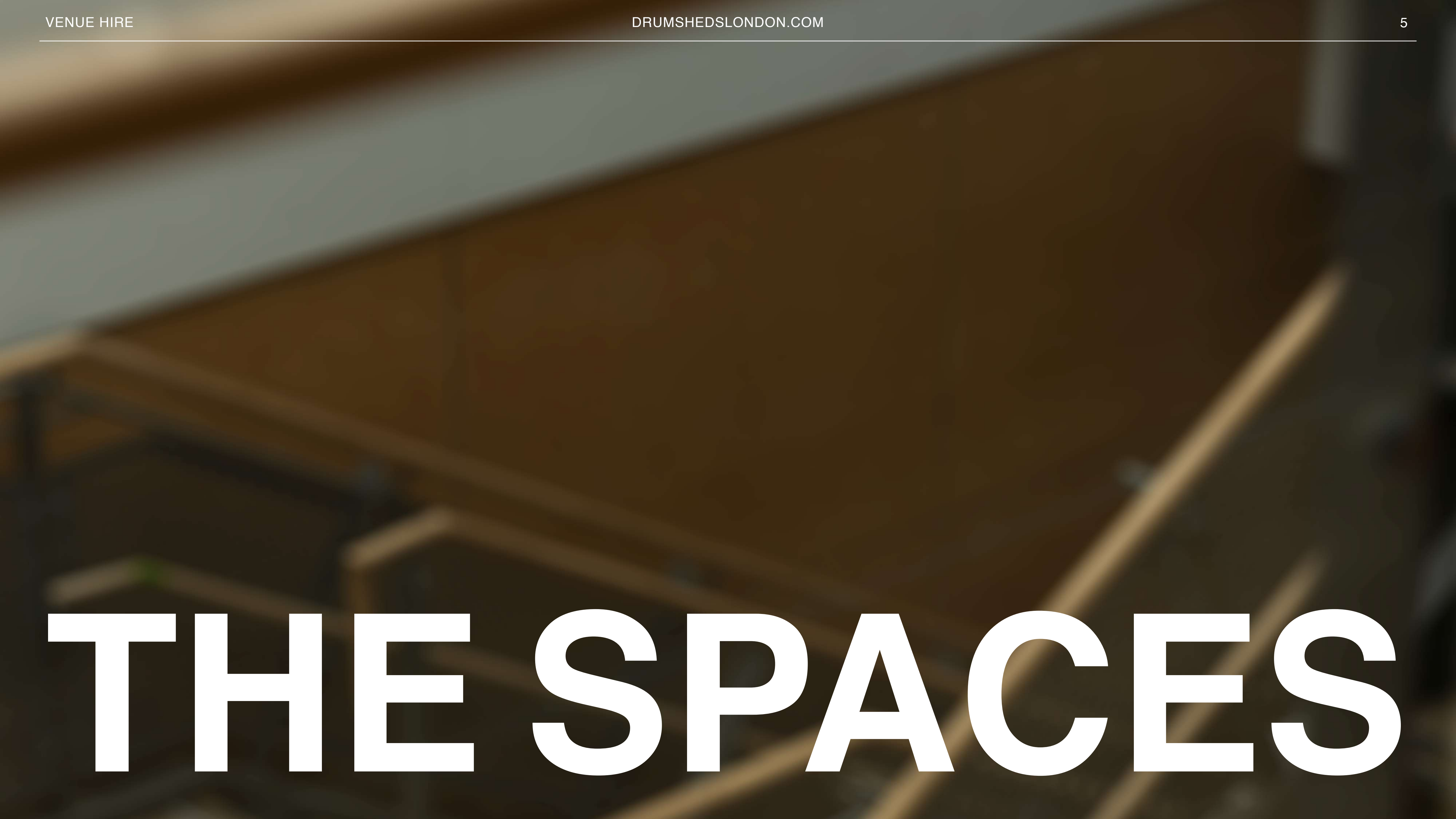


Drumsheds is a hybrid, multi-level, multi-room hire space, set in a disused industrial warehouse in North London.

Drumsheds is a unique space for all. Reimagined from unused warehouses, it breaks free from the constraints of traditional spaces with a blank canvas design and state-of-the-art infrastructure. A place without walls, where nothing is fixed. Festivals, large-scale entertainment, private parties, fashion, conferences & exhibitions, set builds, filming, photography, product launches, and brand activations: something for every community and every niche.

Unlike other London spaces, Drumsheds has never been used for events or filming before, making it a fresh and exciting location. The space provides room for culture to thrive and the functional layout allows for the creation of distinct areas, delivering a unique experience for guests.





# THE SPACES



# ROOM X

Room X is one of the largest warehouse spaces in London. 109,813 sq ft of versatile, hybrid and multi-functional venue space that can accommodate up to 9000 people and a variety of large-scale activations. Includes an in-house stage, PA and rigging capabilities plus direct vehicle access. A new definition of freedom. Ideal for main plenaries, awards dinners, brand activations, music shows, fashion, large scale set build and exhibition space. The possibilities are endless.











# ROOM Y

Room Y can accommodate a capacity of up to 2500. Slightly smaller boundaries, same raw, industrial feel. The space boasts a flexible layout and a range of facilities, including a stage, PA system, power and rigging systems. Perfect for stand alone ticketed cultural experiences, music shows, fashion shows, filming, or immersive brand activations. Also a great addition to Room X if used as breakout space, afterparties and production offices.





BTF 2024



BTF 2024



BTF 2024



BTF 2024





# ROOM Z

Room Z is where things get up close and personal, with a capacity of 450. Offering a smaller, more intimate space, the room provides an excellent connector between the other two spaces. Perfect for breakout, quiet spaces, workshops and immersive activations.









# THE STORES



The Stores acts as a central connection point between Rooms X, Y, Z and The Yard. This versatile area is perfect for hosting exhibition stands, catering, drinks receptions or as a place for guests to mingle during events. The Stores can be transformed into a social hub, offering a unique space for attendees to gather between sessions or enjoy refreshments.





DRINKS

Fire exit

DRINKS

NO ENTRY

NO ENTRY

NO SMOKING  
OR VAPING





# THE GALLERY

A large 3500 capacity area located on the second level of Drumsheds. The Gallery has it's own private entrance and is the perfect space for all hire types including fashion, exhibition and Esport events. Also great as an additional hire to rooms X, Y and Z.







# THE YARD

The Yard is a versatile outdoor events space with direct access to the venue's interior, perfect for hosting festivals, summer parties, and street food markets. Its adaptability goes beyond just events, it can also serve as a unit base for productions, provide parking for large events and accommodate the storage of heavy goods or equipment.









# BACKSTAGE

Our backstage area features a private entrance accessed via the moving walkway, complete with car drop-off and parking facilities. It's the ideal space to add a VIP touch to your event, offering ample room for press walls, step and repeat displays, or meet and greet setups.









# DRESSING ROOMS



Our dressing rooms serve as a haven for artists. These rooms provide the ideal backstage sanctuary. Also great as production offices and crew holding. Elevate your presence and embrace the spotlight with Drumsheds' distinctive style and thoughtful amenities.

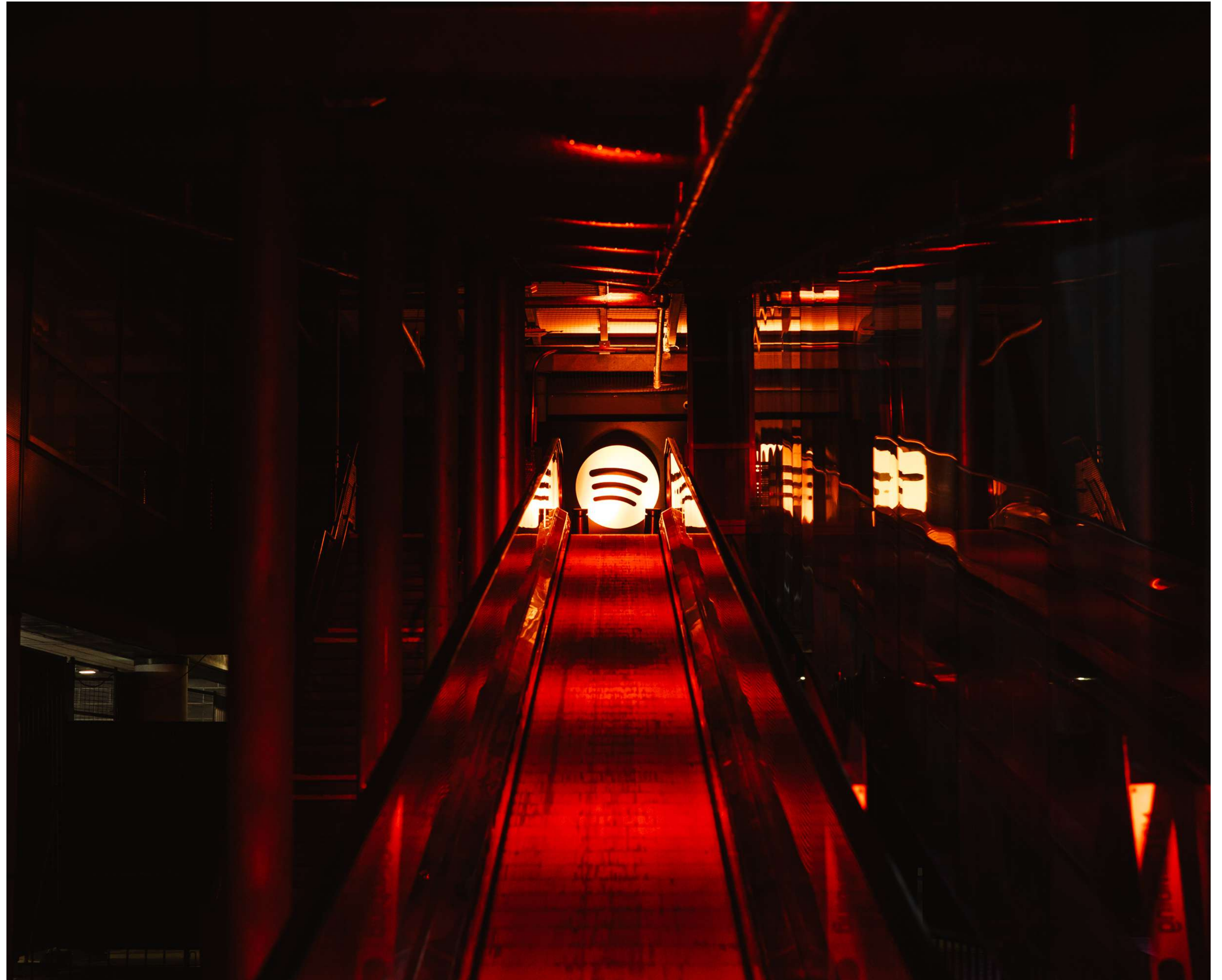






# ADDITIONAL SPACES

Various features like escalators, lifts, moving walkway, foyers and screens are all designed to enhance the guest experience and enhance the visual impact of your event. With these elements, it's an ideal space for shoots, providing the opportunity to capture a range of shots in a single day.







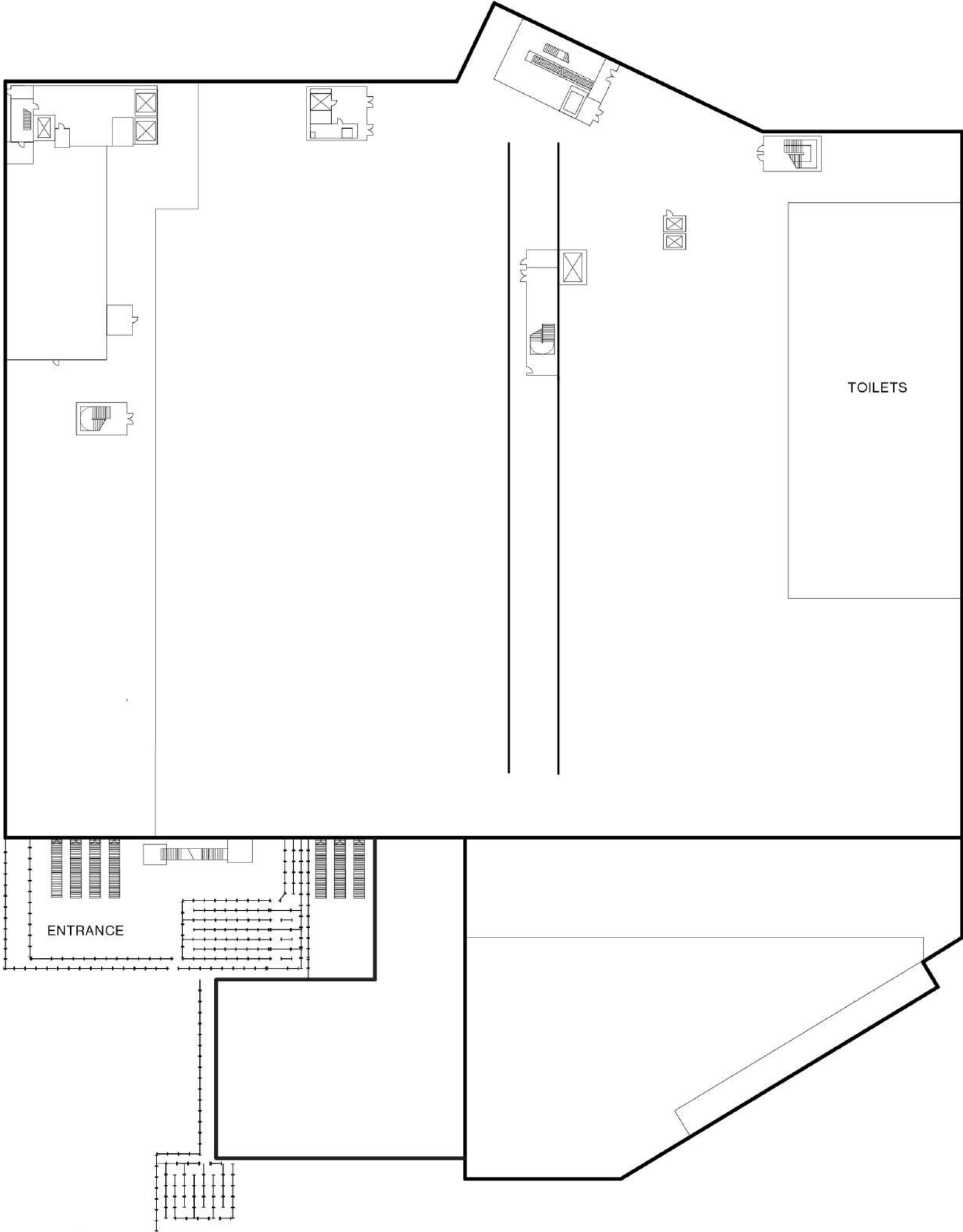


# SPECIFICATIONS

SPACES	CAPACITIES & DIMENSIONS							
ROOMS	L (M)	W (M)	H (M)	SQ.M	STANDING	THEATRE	CABERET	EXHIBITION STANDS
X ROOM	95.8	87.8	8	8,411.2	Up to 15,000	5589	2160	150 3m x 3m
Y ROOM	12.4	29.6	3.4	367	Up to 5000	1674	600	-
Z ROOM	75	22	4.6	1,650	450	-	-	-
THE STORES	79	40.9	4.6	3,231.1	-	-	-	-
THE GALLERY	95.9	64.3	2.8	6,166.3	Up to 3500	5589	2160	140 3m x 3m

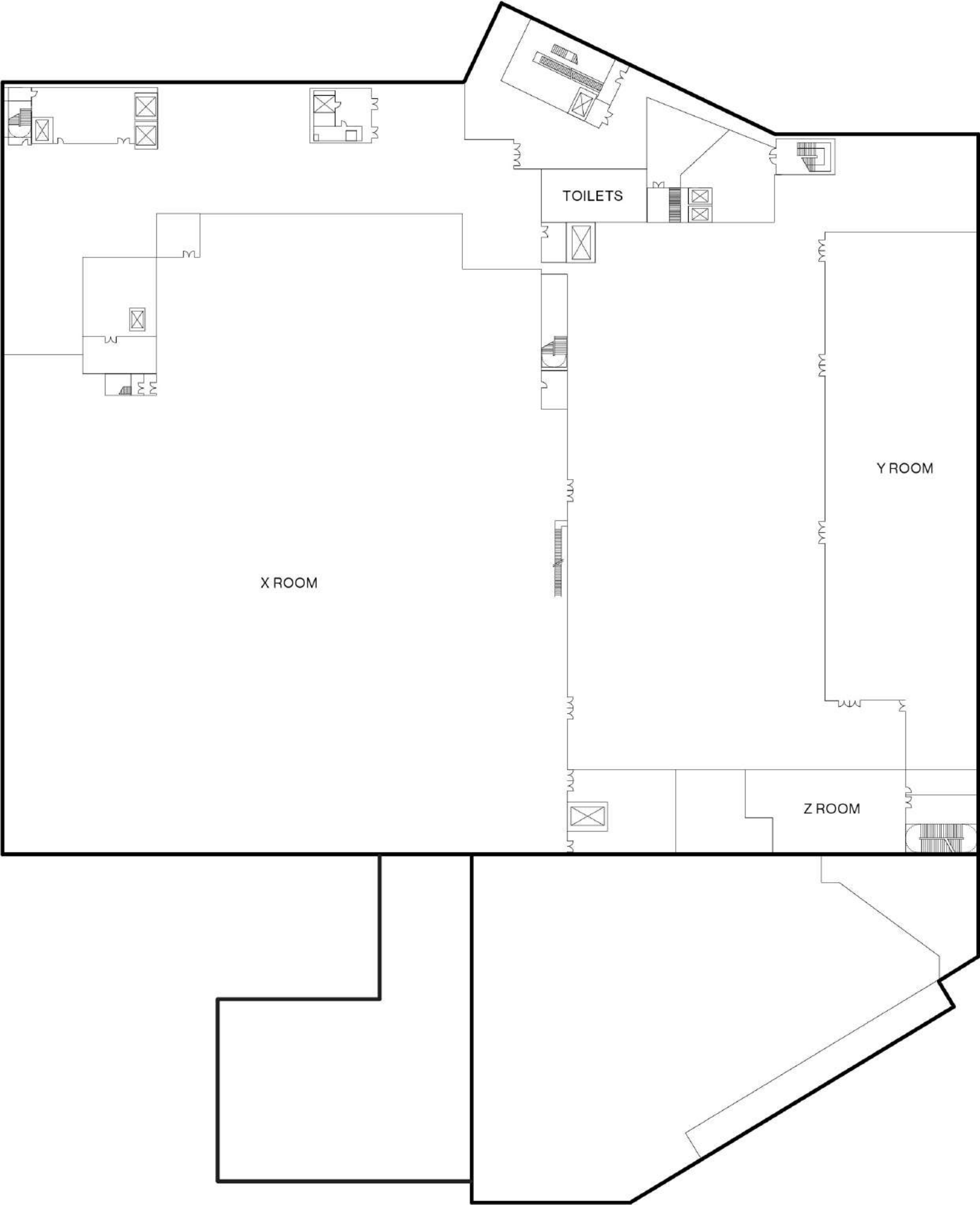


GROUND FLOOR



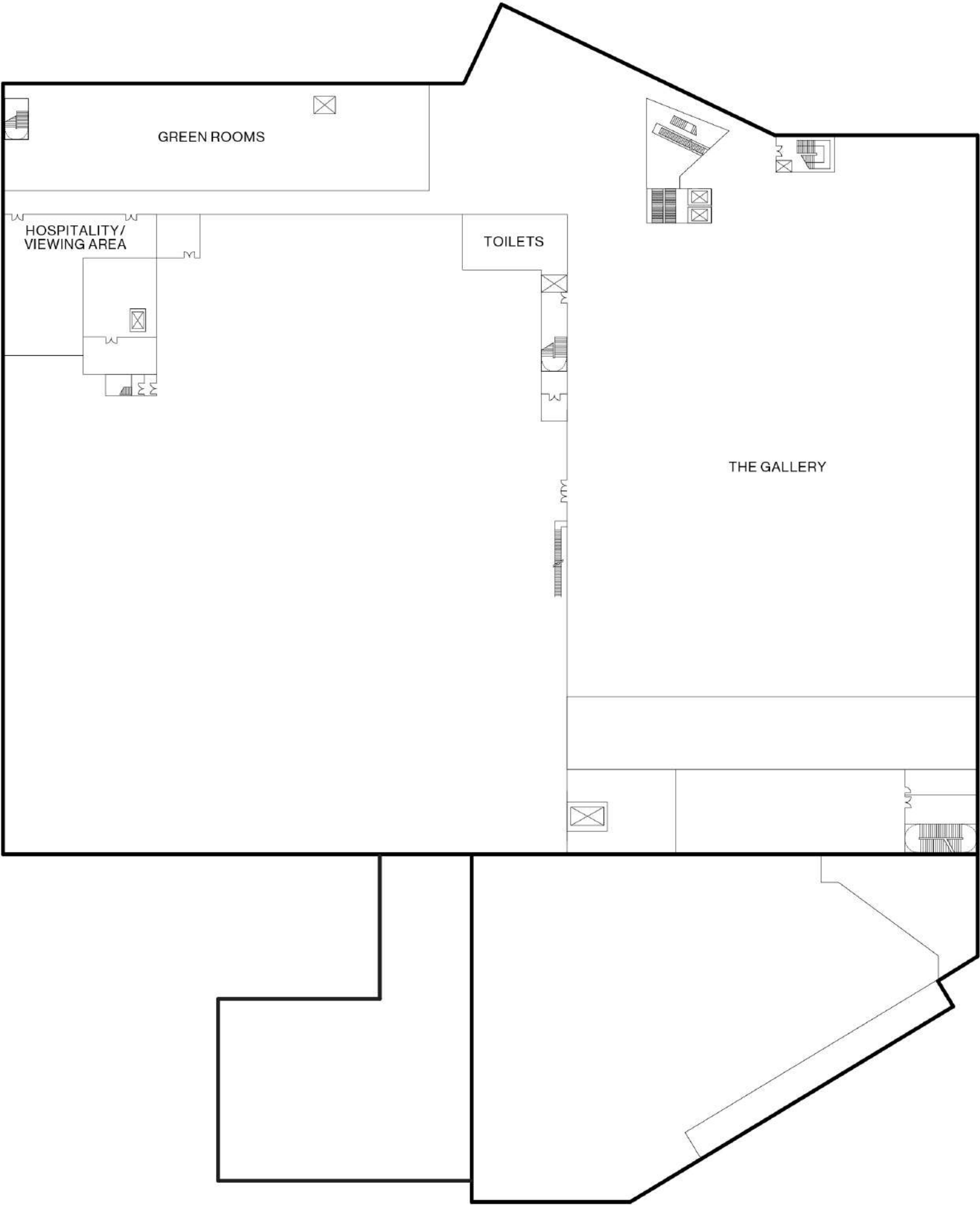


# FIRST FLOOR





SECOND FLOOR





# GETTING HERE

## LOCATION:

Drumsheds is located in Tottenham N18

## ADDRESS:

6 Glover DR, London N18 3HF

## SHUTTLE SERVICE & RAIL:

Nearest station is Meridian Water which is serviced by trains from Stratford & Liverpool Street

Options for convenient shuttle bus service to and from Tottenham Hale

Outdoor space to activate taxi pick up and drop off

## BUS:

Bus routes **192** running from Tottenham Hale and **341** running from Waterloo station stop near the venue.

## AIRPORTS:

City Airport (28 minutes drive)  
London Stansted Airport (36 minutes)  
Heathrow Airport (1 hour drive)



# WANT TO GET IN TOUCH?

HIRE@DRUMSHEDSLONDON.COM  
DRUMSHEDSLONDON.COM  
6 GLOVER DR, LONDON N18 3HF  
02038343416

INSTAGRAM  
LINKEDIN  
FACEBOOK