



DRUMSHEDS



FILMING & PHOTOGRAPHY



ABOUT US

Nestled in Tottenham's evolving landscape, Drumsheds emerges as a cultural beacon, a sprawling canvas that celebrates diversity and the fusion of artistic expressions. Here, the industrial grandeur transforms into a vessel for culture, where every event is more than a gathering—it's a vibrant showcase of the eclectic and the extraordinary.

Venture into an environment where the synthesis of experience and imagination plays out across three versatile areas within 50,000 square metres of adaptable space. Our infrastructure isn't solely cutting-edge; it becomes part of the creative narrative.

X ROOM

The X Room at Drumsheds is a filmmaker's dream, offering 109,813 square feet of unrestricted space. Its towering ceilings not only inspire grand set designs but also facilitate complex lighting setups and aerial shots, perfect for ambitious productions that require a large, unobstructed area.

DIMENSIONS: H: 8M W: 87.8M L: 95.8M
AREA: 8411SQM







Y ROOM

Room Y is the sanctuary for pristine audio production. Acoustically engineered for excellence, its walls are a barrier to the outside world, ensuring every sound is captured just as intended. Ideal for shoots that require controlled sound environments, such as intimate interviews or acoustic performances.

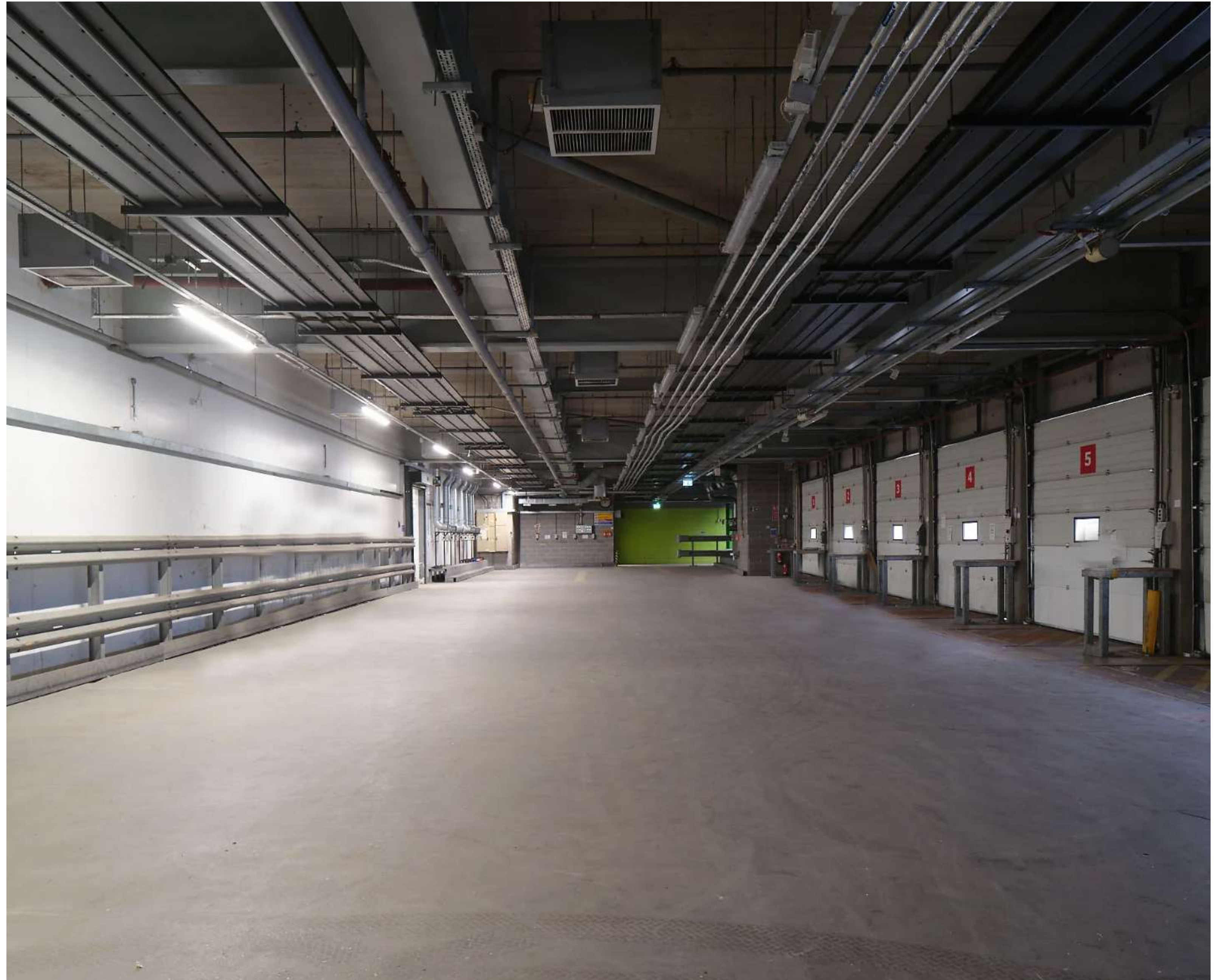
DIMENSIONS: H: 4.4M W: 22.6M L: 86.7M
AREA: 1959.4SQM



Z ROOM

For moments that demand a closer perspective, the Z Room offers a more intimate setting, perfect for smaller-scale shoots that require a personal touch. Linking seamlessly with larger spaces, it's equipped with full power and rigging, ideal for exclusive shoots or scenes that call for a focused atmosphere.

DIMENSIONS: H: ?M W: 12.7M L: 26.4M
AREA: 335SQM

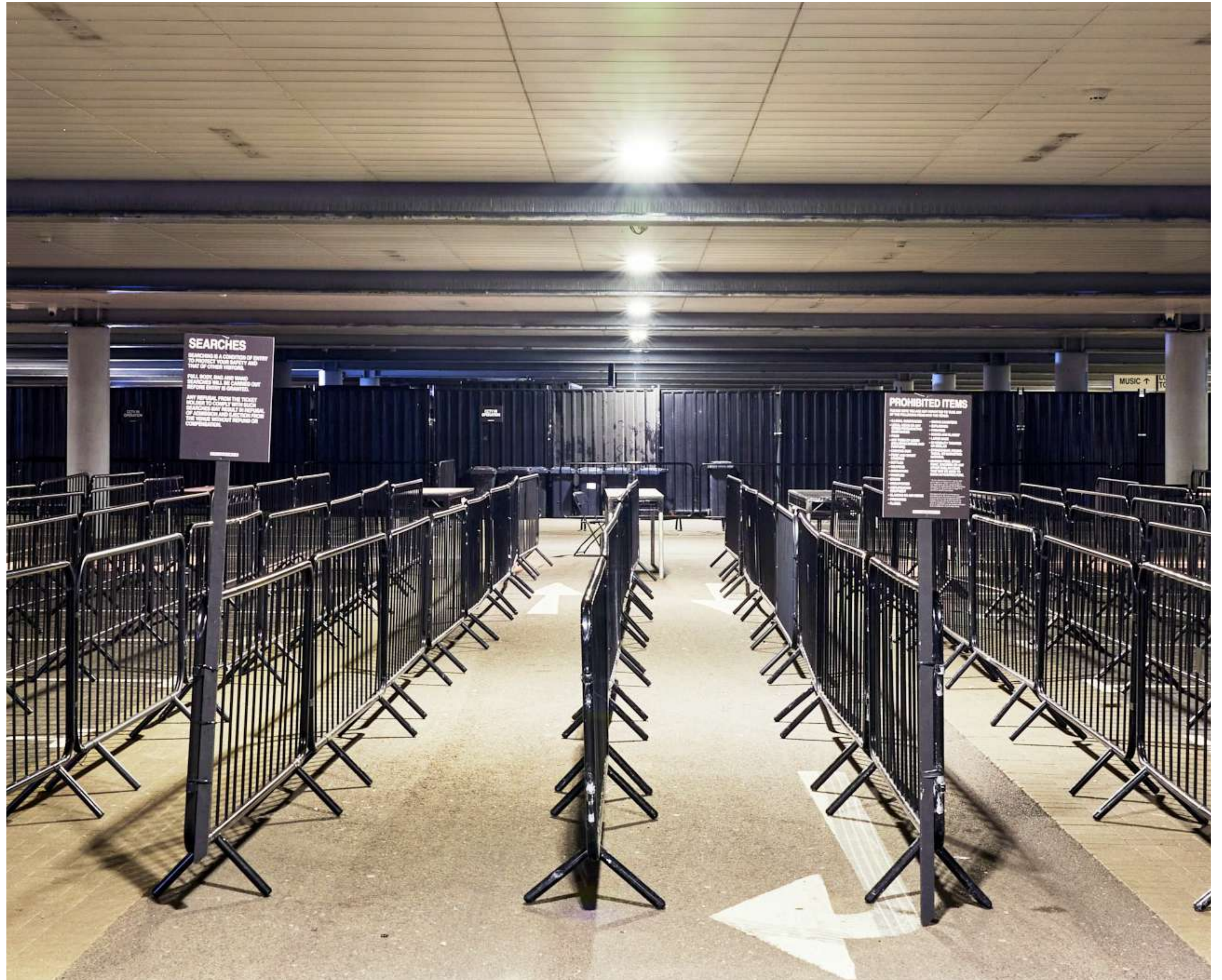




GROUND LEVEL

The Ground Level at Drumsheds is an undercover expanse that defies the elements, making it a solid location for film and photoshoots that require a versatile, all-weather setting. Whether it's the backdrop for a festival scene, the buzz of a market, or the quiet intensity of an exhibition space, this area is an adaptable stage ready to accommodate your creative vision.

DIMENSIONS: H: 8M W: 87.8M L: 95.8M
AREA: 8411SQM





THE GALLERY

Elevate your launch at The Gallery. With an expansive space and a capacity for large crowds, it's designed for major reveals that aim to make a lasting impression in the automotive industry.

DIMENSIONS: H: 3M W: 64.3M L: 95.9M
AREA: 6166.3 SQM

THE YARD

The Yard is where the raw energy of the city infuses your project. This open-air space provides an authentic urban backdrop for any shoot, offering a gritty, textured setting that's as versatile as the scenarios you can imagine and enact within its bounds.

DIMENSIONS: H: ?M W: ?M L: ?M
AREA: ?SQM





DRESSING ROOMS & PRODUCTION OFFICES

Discover our dedicated green rooms, where comfort and focus come together effortlessly. Designed for a relaxed yet productive atmosphere, these spaces provide the perfect setting to prepare for your film or video shoot. Our production offices are functional and practical, equipped to handle the logistics of your project with ease. From brainstorming sessions to final edits, we offer a straightforward environment to bring your vision to life.

DIMENSIONS: H: ?M W: ?M L: ?M
AREA: ?SQM

ANCILLARY SPACE

Welcome to The Ancillary Space, where practicality meets hospitality. Picture a place where film and TV teams can refuel with hot beverages, grab a snack, or recharge between takes. This is your go-to spot for on-site catering, offering a variety of refreshments to keep your crew energized and focused throughout the production.

DIMENSIONS: H: ?M W: ?M L: ?M
AREA: ?SQM





LOADING BAY

The loading bay's rugged charm makes it a prime location for ensuring smooth accessibility for all filming setups. Drumsheds' design prioritises easy access, enabling film crews to effortlessly load and unload equipment for different scenes. This seamless accessibility ensures that every aspect of the shoot can be efficiently arranged, enhancing the overall production experience for cast and crew alike.

DIMENSIONS: H: 3M W: 64.3M L: 95.9M
AREA: 6166.3 SQM



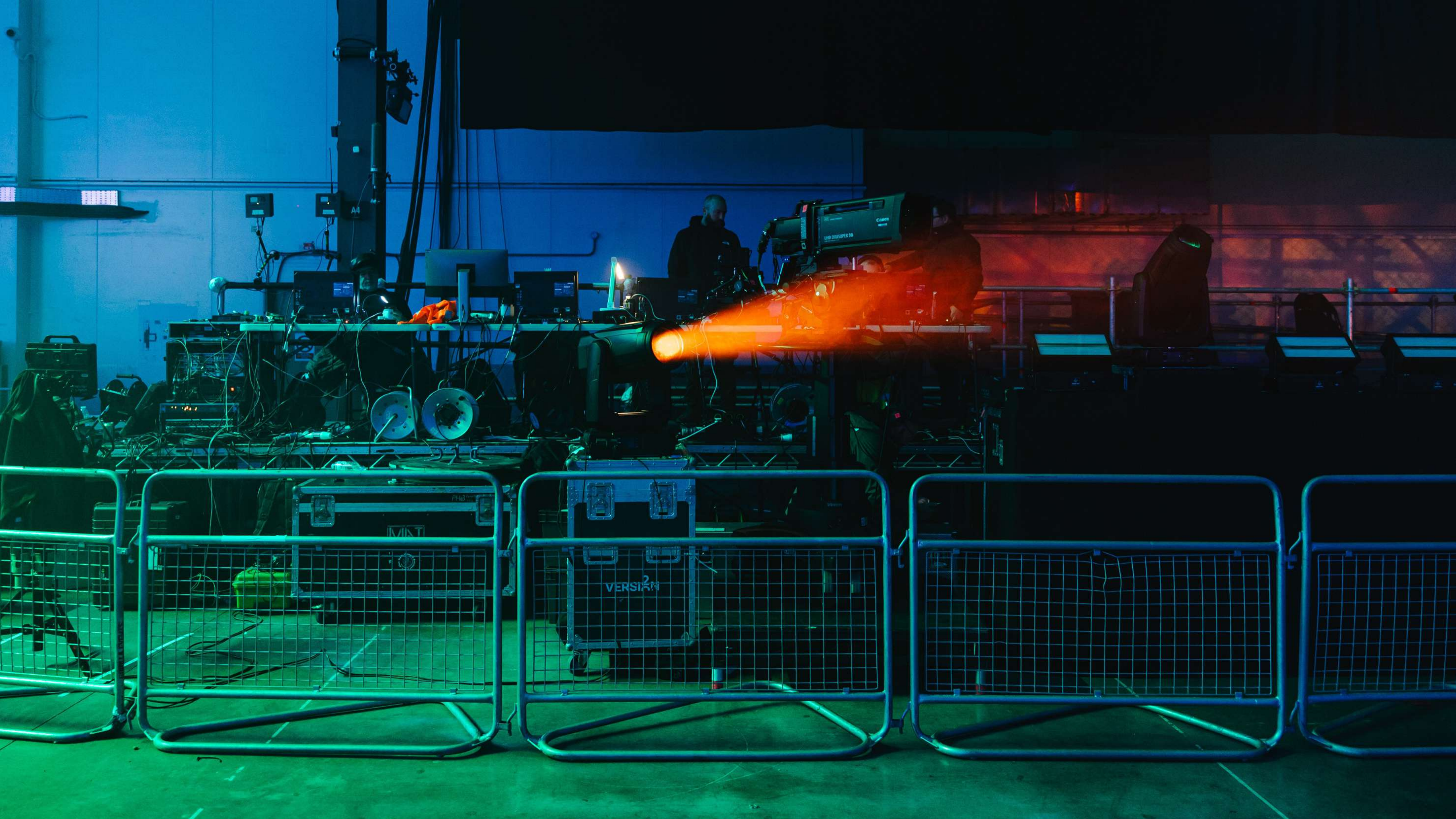
MODULAR SPACES FOR HIRE

Whether you're aiming to utilise our entire venue or specific areas like Room X, Y, Z, and The Yard, Drumsheds provides versatile spaces tailored to your filming needs. From intimate shoots to expansive productions, we offer a custom fit for any film or video project, be it a feature film set or a documentary shoot.

Our spaces feature a raw, industrial aesthetic, ideal for automotive launches or productions seeking a minimalist or modern vibe. With spacious high ceilings allowing for grand set designs and soundproofing ensuring optimal audio quality, Drumsheds sets the stage for memorable filming experiences.

Extended bookings are available, fostering ongoing collaborations and projects beyond single-day shoots. Whether you're planning a week-long shoot or a month-long production, our venue is equipped to accommodate your filming schedule.

Drumsheds goes beyond being just a space—it's your partner in filming, offering solutions for set construction, technical installations, and immersive experiences. From building custom sets to creating immersive environments, our team is committed to bringing your cinematic visions to life.



VENUE DETAILS & FACILITIES

ACCESS TIMES

08:00 - 20:00
(extended hours available on request)

Accessible entrances and facilities ensure an inclusive experience for all.

Note: In-house AV services are available, subject to event dates, providing seamless technical support for your needs.

FEATURES

Blank canvas, high ceilings, blackout capabilities, loading bay, goods lift, unit base, vehicle access.

AMENITIES

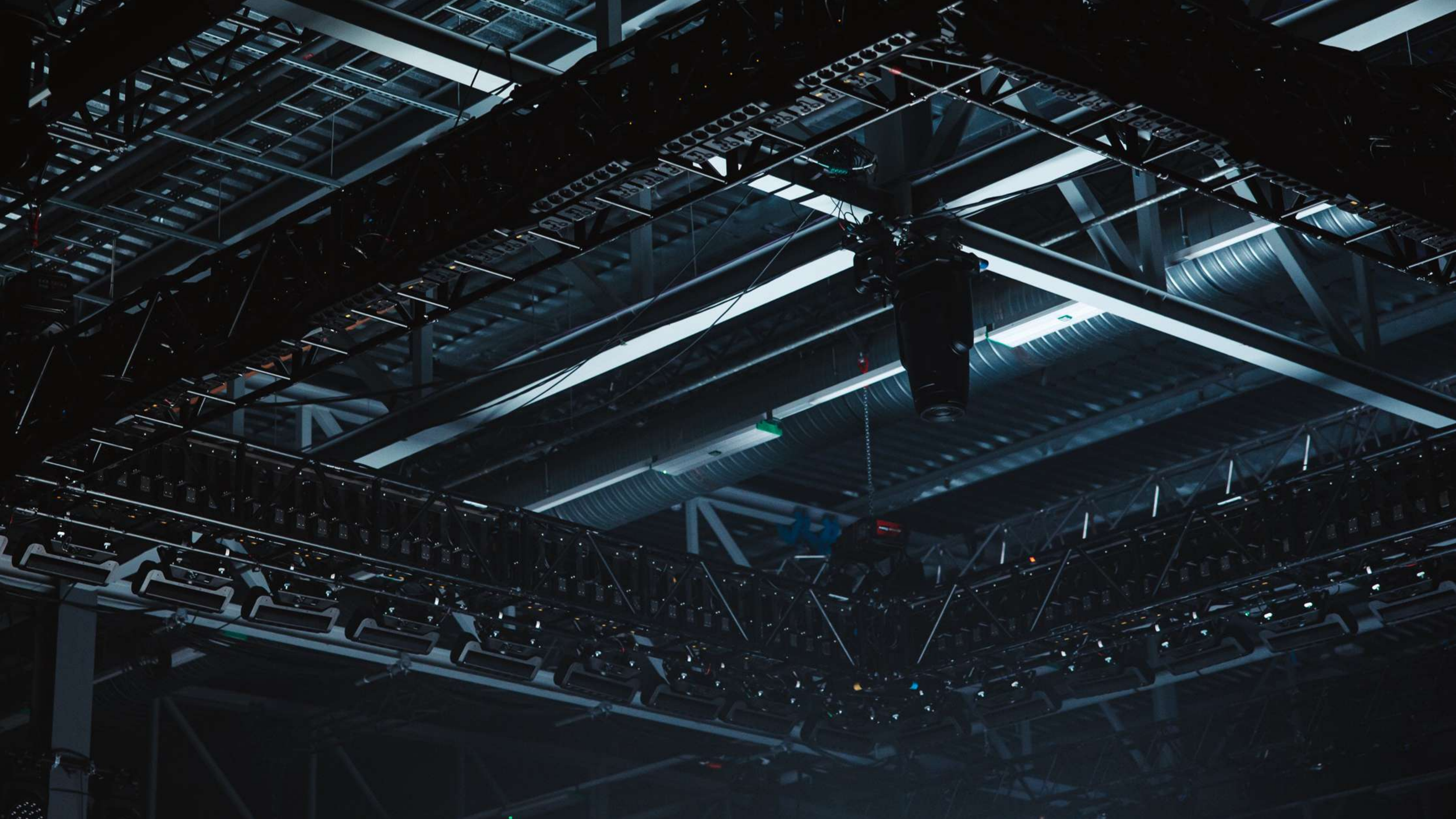
- Green rooms & production offices
- Toilet Facilities
- Unit base

IDEAL USES

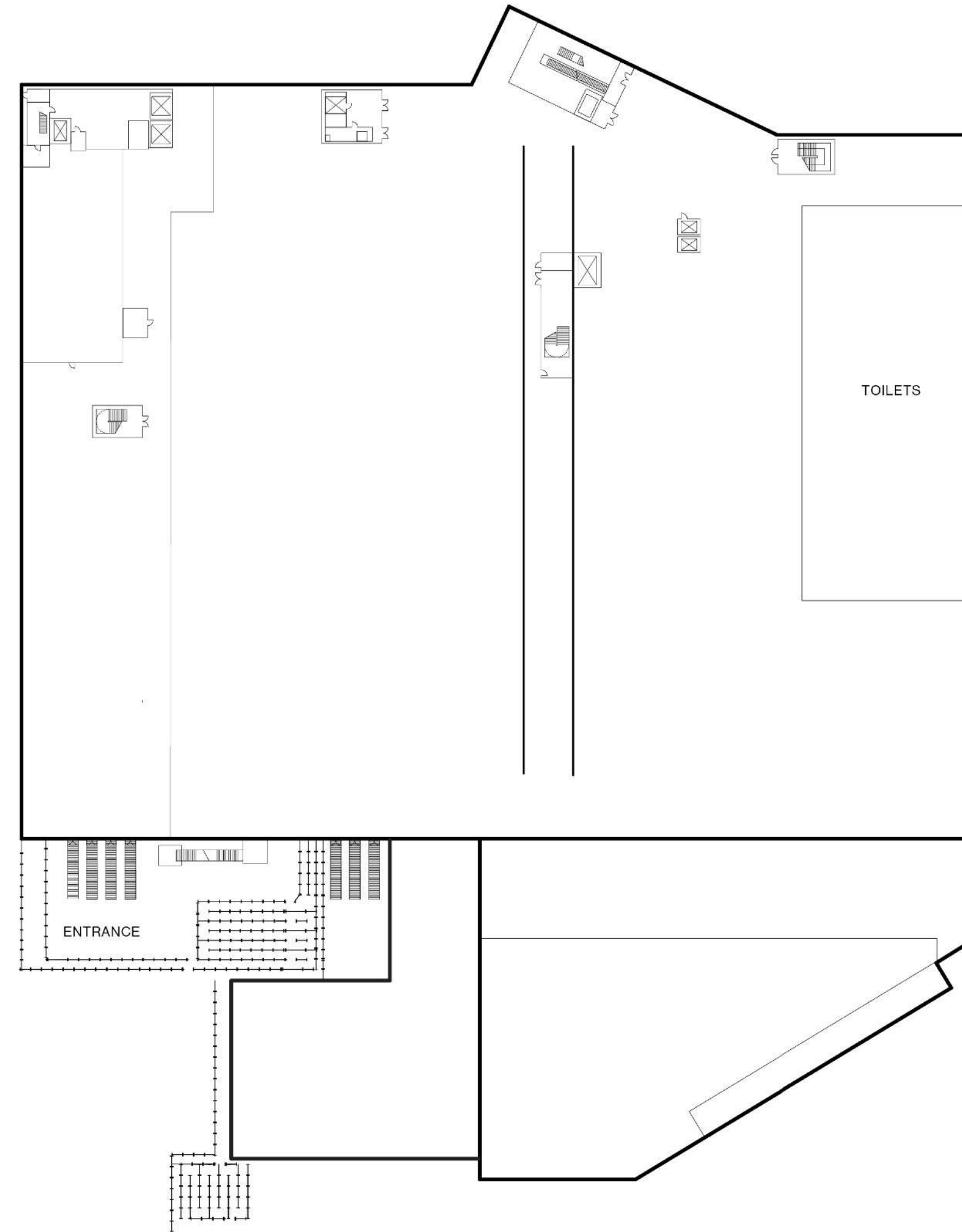
- Filming
- Photography
- Set builds
- Rehearsal space
- Workshop space
- Unit & crowd base
- Fashion events

SPECIFICATIONS

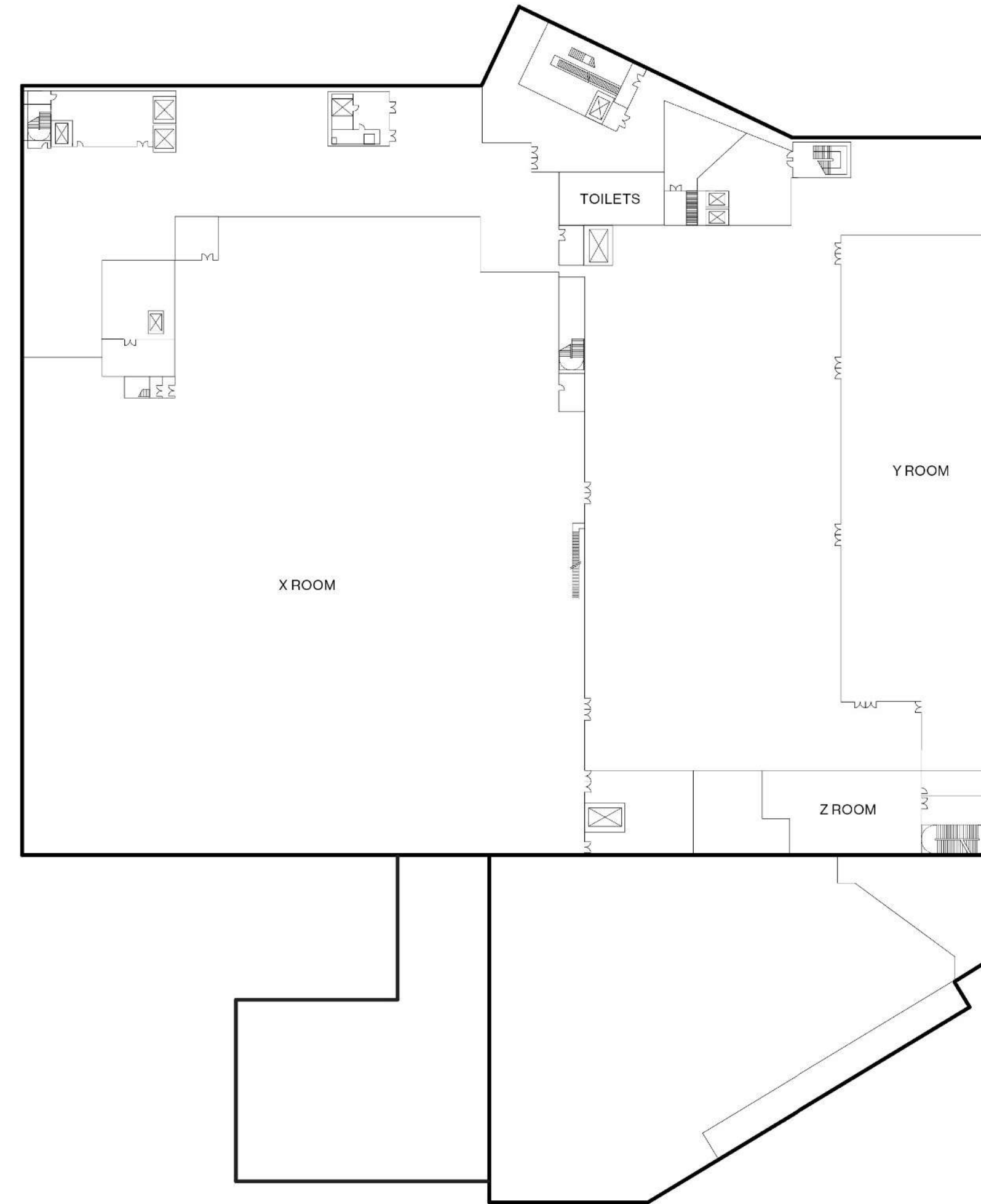
SPACES									
ROOMS	DIMENSIONS				SQ.M	CAPACITY			
	L (M)	W (M)	H (M)						
X ROOM	95.8	87.8	8	8,411.2	Seating 3,200 theatre style (opt 1) 5,580 theatre style (opt 2) 2,160 cabaret (opt 3)	Standing 3,500 - 10,000	Exhibitions Space for 140 stands (3m x 3m)	Arena 1,700 seated, 4,500 standing	
Y ROOM	86.7	22.6	4.4	1,959.4	Seating 1,750 theatre style (opt 1) 600 cabaret style (opt 2)	-	-	-	
Z ROOM	26.4	12.7	-	335	-	Standing 450	-	-	
THE GALLERY	95.9	64.3	3	6,166.3	Seating 5,580 theatre style 2,160 cabaret style (tables of 10)	Standing 3,500	Exhibitions Space for 140 stands (3m x 3m)	-	



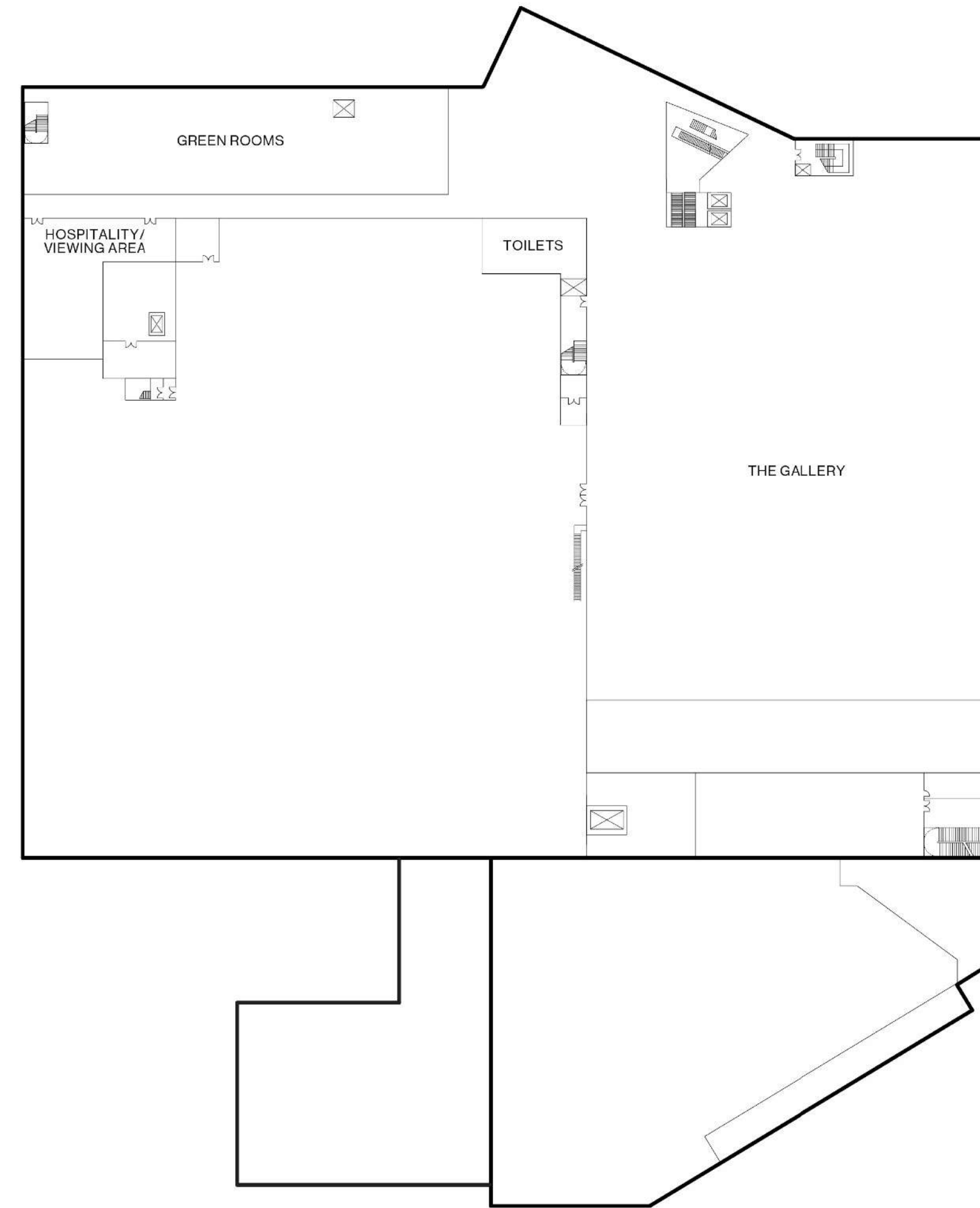
GROUND FLOOR



FIRST FLOOR



SECOND FLOOR



SUPPLIERS

PRODUCTION, RIGGING & POWER

Vibration Production

E: Spyros.Fasegkas@vibrationproduction.com

T: +447751738878
PRINT & BRANDING

N2 Display

E: mick.woodward@n2display.com
T: 01992 440 333

WIFI

Noba

E: nick@noba.com
T: 020 34404 61

CATERING

KERB

E: toby@kerbevents.com
T: 07475 348772

Moving Venue

E: greatfood@movingvenue.com
T: 020 8038 8783

Jimmy Garcia

E: events@jimmygarciacatering.com
T: 020 7998 3676



FAQS

QUOTES

Our team provides hire fees and indicative additional charges, which include cleaning, security, event marshals, building manager, medical cover, and health & safety.

PRODUCTION

Handled in-house by Vibration Design & Production.

POWER

Readings will be taken pre and post event.

WI-FI

Obtain a quote through NOBA.

EXTERNAL SUPPLIERS?

Please get in touch with your venue contact if you wish to use an external supplier, subject to venue approval.

DAMAGE DEPOSIT

From £5,000 required, refundable post-event if no damages and all invoices are settled.

LICENSING

Adherence to the venue's noise management plan is required, with music details submitted and charged per standard PRS rates.

WASTE REMOVAL

To be managed by the hirer to avoid extra charges.

PARKING

Drumsheds offers multiple external spaces that can be hired for shoots, unit bases and production parking. There is no guest parking on site. Limited spaces are available for Blue Badge holders, if required, please discuss with your venue contact.

GETTING HERE

LOCATION

Drumsheds is located in N18, Tottenham.

ADDRESS

6 Glover DR, London N18 3HF

SHUTTLE SERVICES + RAIL

Option for convenient shuttle bus services to and from Drumsheds to Tottenham Hale.

BUS

Bus routes 192 (running from Tottenham to Enfield) and 341 (running from Waterloo station to Meridian Water station) stop near the venue.

AIRPORTS

- City Airport (28 minutes drive)
- London Stansted Airport (36 minutes)
- Heathrow Airport (1 hour drive)

WANT TO GET IN TOUCH?

HIRE@DRUMSHEDSLONDON.COM
DRUMSHEDSLONDON.COM
6 GLOVER DR, LONDON N18 3HF

INSTAGRAM
LINKEDIN
FACEBOOK