



# DRUMSHEDS

EXHIBITIONS & CONFERENCES



# ABOUT US



Amidst the transformative landscape of Meridian Water, Drumsheds distinguishes itself as a modular sanctuary of innovation, providing an extensive and adaptable setting for conferences and exhibitions.

As you enter Drumsheds, you encounter a realm where utility meets ingenuity. The space stretches across three distinct yet interconnected areas, encompassing 50,000 square metres of modifiable space. The beauty of Drumsheds lies in its flexibility; the infrastructure is not merely contemporary — it's malleable, serving as a vital component of the story your event aims to tell.

The design of Drumsheds champions a modular approach, allowing you to tailor the space to the exact scale of your event. Whether you require a compact area for a focused symposium or an expansive hall for a major industry exhibition, the venue's divisible nature means you only occupy and pay for the space you need. This flexibility ensures that Drumsheds is the ideal partner for events of any size, enabling organisers to craft an environment that fits their specific vision without the excess of unused areas.



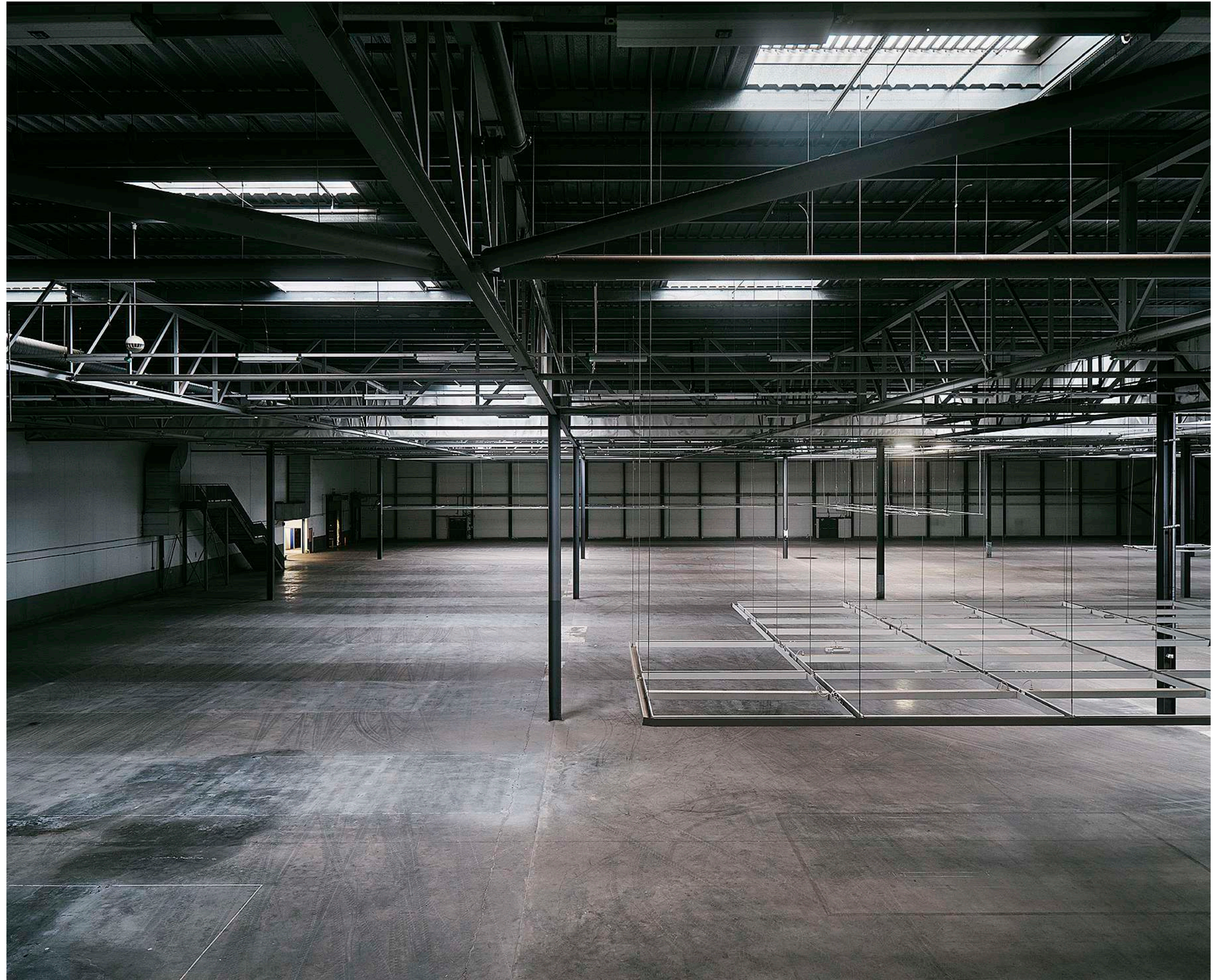
# X ROOM

The X Room at Drumsheds, spanning a vast 109,813 square feet, is ideal for large-scale conferences and exhibitions. With high ceilings perfect for elaborate setups and aerial camera work, it transforms effortlessly from a tech conference hub to an industry trade show.

This adaptable space can serve as an auditorium, panel discussion theatre, or a showcase for cutting-edge exhibits. It's equipped to support ambitious displays and interactive booths, making it a prime choice for events seeking to captivate and network, truly embodying the heart of any significant event at Drumsheds.

The room's infrastructure supports the most ambitious of event plans, from towering custom-built displays that reach towards the industrial-chic ceilings, to an array of booths and installations that invite exploration and networking.

DIMENSIONS: H: 8M W: 87.8M L: 95.8M  
AREA: 8411SQM











# Y ROOM

At the heart of Drumsheds, Room Y stands as the acoustic gem, tailored for the symphony of dialogue and exchange that defines conferences and exhibitions.

The walls of Room Y serve as the gatekeepers of sound, creating a serene auditory chamber for keynote speeches, corporate presentations, and panel discussions. It's an environment where the subtleties of communication are not lost to echoes or background noise, but are instead elevated, allowing for a deeper connection with the audience.

Room Y's controlled sound environment also makes it ideal for showcasing multimedia presentations or hosting press conferences where every statement is crystal clear. The versatility of Room Y lies in its ability to transform into a dynamic learning space for educational conferences, a quiet room for delicate negotiations, or a serene gallery for audio-visual exhibits.

DIMENSIONS: H: 4.4M W: 22.6M L: 86.7M  
AREA: 1959.4SQM



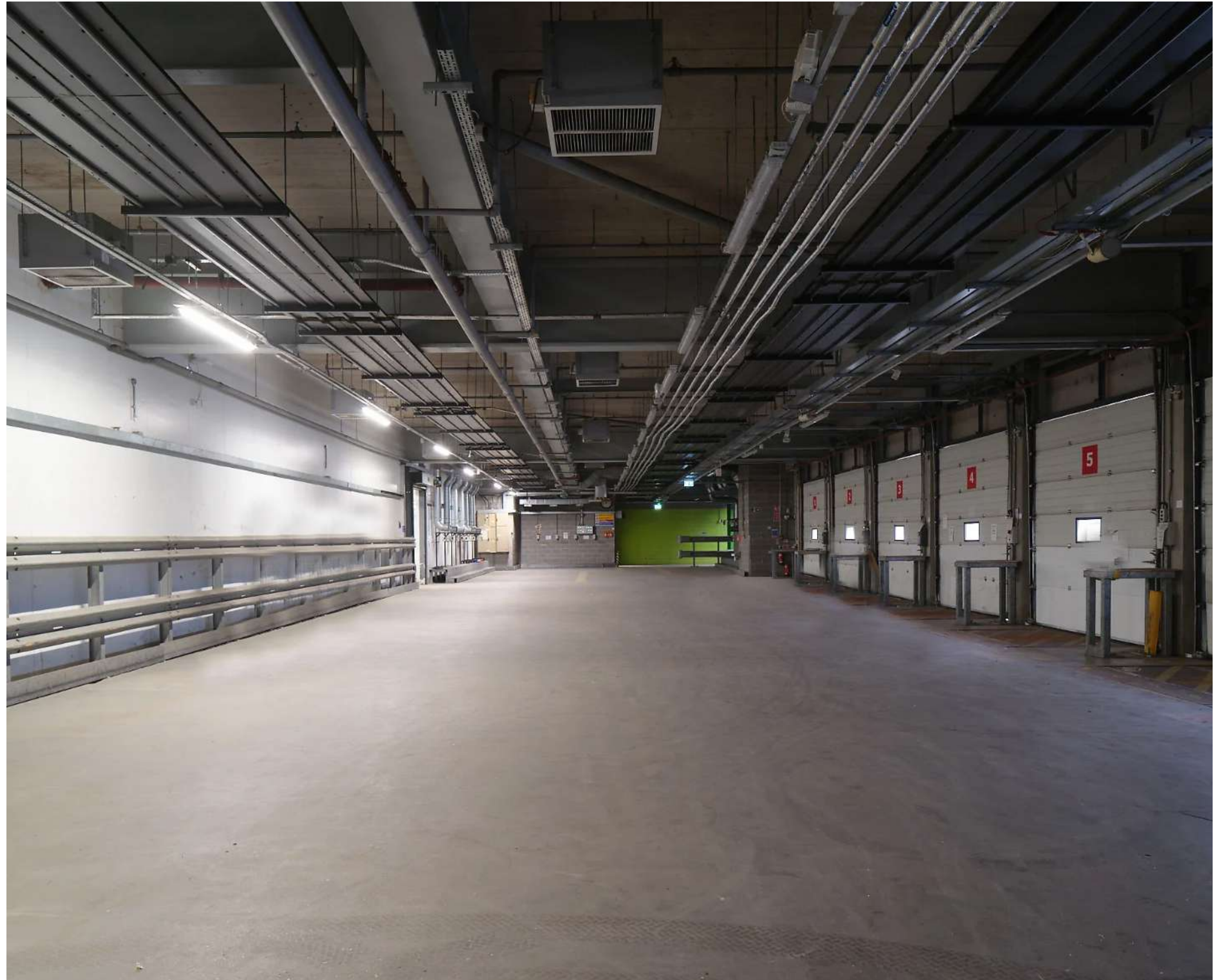




# Z ROOM

Z Room at Drumsheds, while more intimate, offers a versatile setting ideal for small-scale conferences, exclusive sponsor exhibitions, and bespoke events. Its acoustically friendly environment is conducive to focused discussions and high-level networking. This space, easy to integrate into the larger venue, can transform into a VIP area for special reveals or a relaxed breakout space for in-depth connections. Despite its size, Room Z's full technical capabilities ensure no compromise on quality, making it a perfect choice for sponsors seeking a dedicated area or for hosting intimate, interactive sessions where every detail is paramount.

DIMENSIONS: H: ?M W: 12.7M L: 26.4M  
AREA: 335SQM





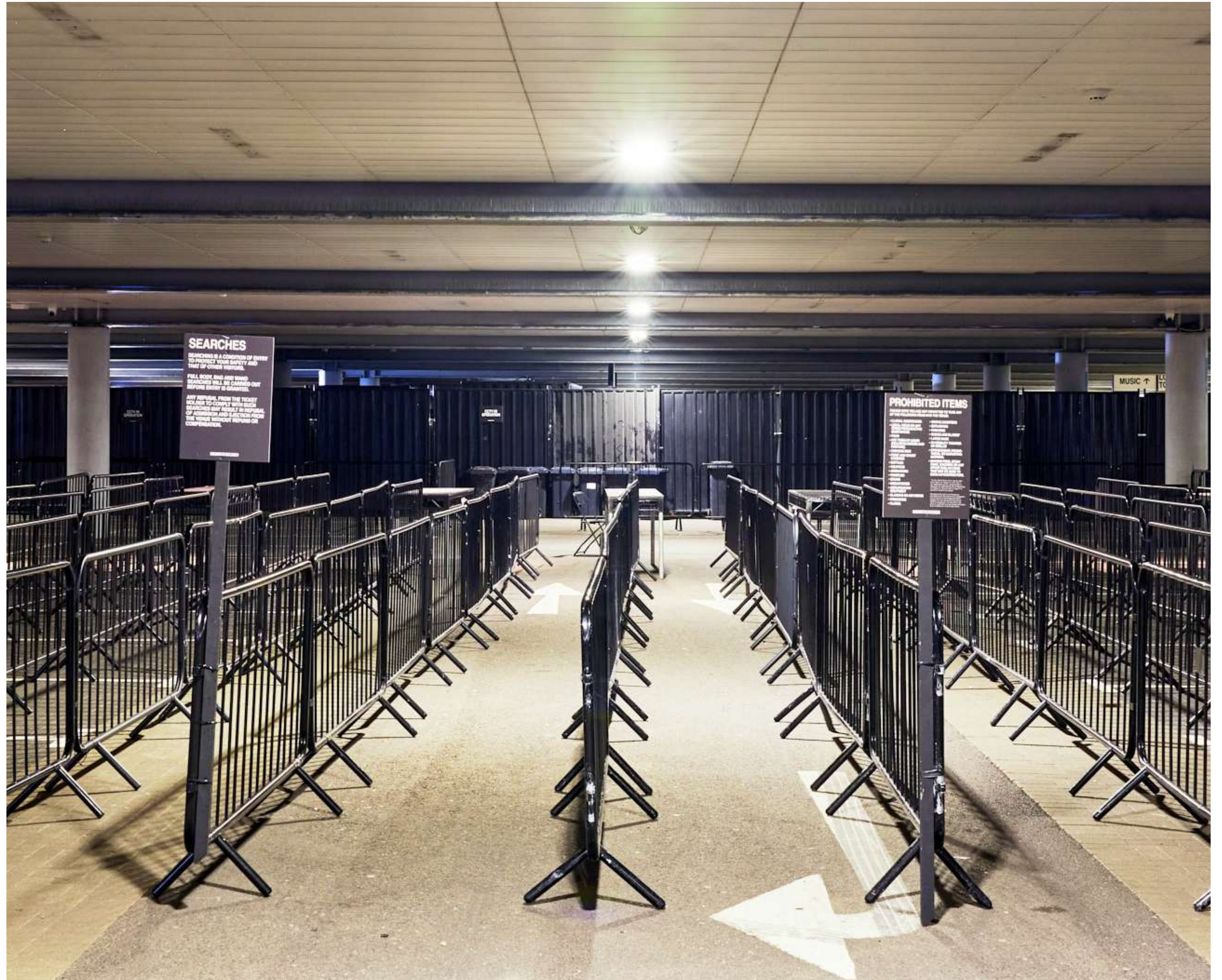




# GROUND LEVEL

The Ground Level at Drumsheds is an undercover expanse that defies the elements, making it a solid location for film and photoshoots that require a versatile, all-weather setting. Whether it's the backdrop for a festival scene, the buzz of a market, or the quiet intensity of an exhibition space, this area is an adaptable stage ready to accommodate your creative vision.

DIMENSIONS: H: 8M W: 87.8M L: 95.8M  
AREA: 8411SQM







# THE GALLERY

Ascend to The Gallery at Drumsheds, offering a premium event experience. Spanning 66,456 square feet with a capacity of 5,000, it's ideal for large-scale exhibitions and conferences. Additionally, The Gallery provides versatility, serving as a breakout space, on-site storage, and a dedicated networking area for a comprehensive event solution.

DIMENSIONS: H: 3M W: 64.3M L: 95.9M  
AREA: 6166.3 SQM



# THE YARD

The Yard at Drumsheds is where open-air energy meets urban flair, perfect for hosting lively outdoor exhibitions or vibrant networking events.

It's a space that resonates with Drumsheds' signature blend of raw authenticity and creativity, now complete with options for outdoor food and beverage, adding an extra zest to your event experience.

DIMENSIONS: H: ?M W: ?M L: ?M  
AREA: ?SQM







# DRESSING ROOMS & PRODUCTION OFFICES

Utilise the privacy of our dressing rooms for VIP areas or utilise our fully equipped offices for event organisation and management.

DIMENSIONS: H: ?M W: ?M L: ?M  
AREA: ?SQM



# ANCILLARY SPACE

Spacious and adaptable in design, these areas are versatile for various event needs, such as registration and networking lounges. Adding to this flexibility is The Stores, an ancillary space connecting all three rooms on level 1. Ideal for registration, networking, breakout sessions, or expo stands, The Stores offer the freedom to roam, facilitating seamless movement and interaction across the event.

DIMENSIONS: H: ?M W: ?M L: ?M  
AREA: ?SQM







# LOADING BAY

The rugged charm of the loading bay is perfect for unique exhibits or as a functional space for loading and unloading displays.

Drumsheds' versatile spaces are designed to bring the unique vision of each event organiser to life, offering a vast array of settings for every aspect of your conference or exhibition.

DIMENSIONS: H: 3M W: 64.3M L: 95.9M  
AREA: 6166.3 SQM





# MODULAR SPACES FOR HIRE

Whether you require the entirety of our venue or a portion thereof, areas such as Room X, Y, Z, and the The Yard are available for hire, ensuring a tailored fit for any event, from industry conferences to expansive exhibitions.

**Industrial Aesthetic:** Our spaces feature a raw, industrial look that's perfect for contemporary events that desire a minimalist or modernist edge. High ceilings invite grand designs, while soundproofing ensures an uninterrupted auditory experience.

**Available for Long-Term Engagements:** Drumsheds is open for extended bookings, fostering long-term collaborations and events beyond the traditional one-day conference or exhibition.

**Versatility is Our Virtue:** Drumsheds is more than a space—it's a partner in event planning, offering solutions for set construction







# VENUE DETAILS & FACILITIES

## ACCESS TIMES

08:00 - 20:00  
(extended hours available on request)

Accessible entrances and facilities ensure an inclusive experience for all.

Note: In-house AV services are available, subject to event dates, providing seamless technical support for your needs.

## FEATURES

Blank canvas, high ceilings, blackout capabilities, loading bay, goods lift, unit base, vehicle access.

## AMENITIES

- Green rooms & production offices
- Toilet Facilities

## IDEAL USES FOR CONFERENCES & EXHIBITIONS

- Keynote and Breakout Sessions
- Corporate Meetings and Networking Events
- Trade Shows and Industry Expos
- Product Launches and Demonstrations
- Educational Workshops and Seminars
- Award Ceremonies and Corporate Galas
- Interactive Displays and Technology Showcases
- Themed Exhibitions and Brand Experiences



# SPECIFICATIONS

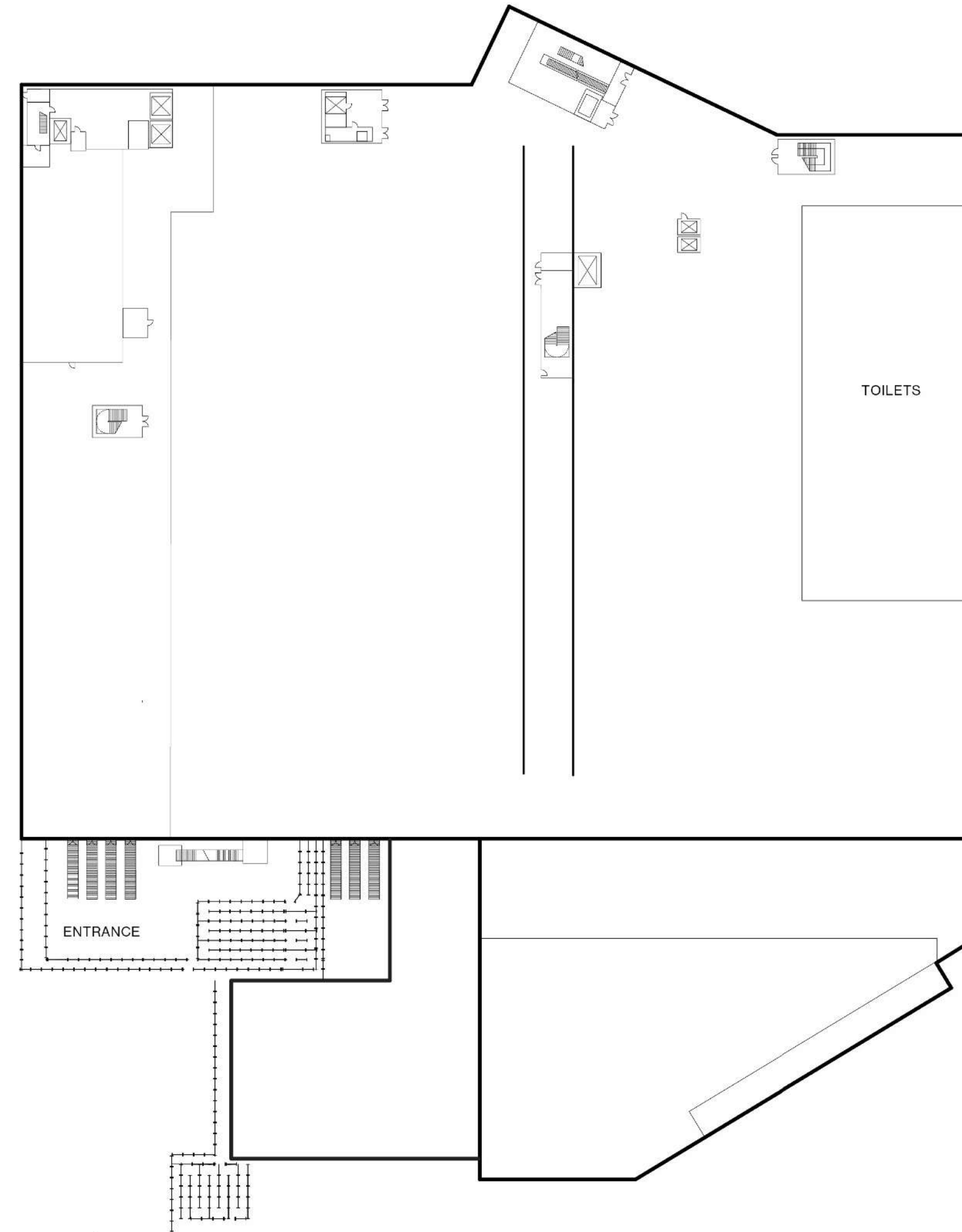
SPACES									
ROOMS	DIMENSIONS				SQ.M	CAPACITY			
	L (M)	W (M)	H (M)						
X ROOM	95.8	87.8	8	8,411.2	<b>Seating</b> 3,200 theatre style (opt 1) 5,580 theatre style (opt 2) 2,160 cabaret (opt 3)	<b>Standing</b> 3,500 - 10,000	<b>Exhibitions</b> Space for 140 stands (3m x 3m)	<b>Arena</b> 1,700 seated, 4,500 standing	
Y ROOM	86.7	22.6	4.4	1,959.4	<b>Seating</b> 1,750 theatre style (opt 1) 600 cabaret style (opt 2)	-	-	-	
Z ROOM	26.4	12.7	-	335	-	<b>Standing</b> 450	-	-	
THE GALLERY	95.9	64.3	3	6,166.3	<b>Seating</b> 5,580 theatre style 2,160 cabaret style (tables of 10)	<b>Standing</b> 3,500	<b>Exhibitions</b> Space for 140 stands (3m x 3m)	-	





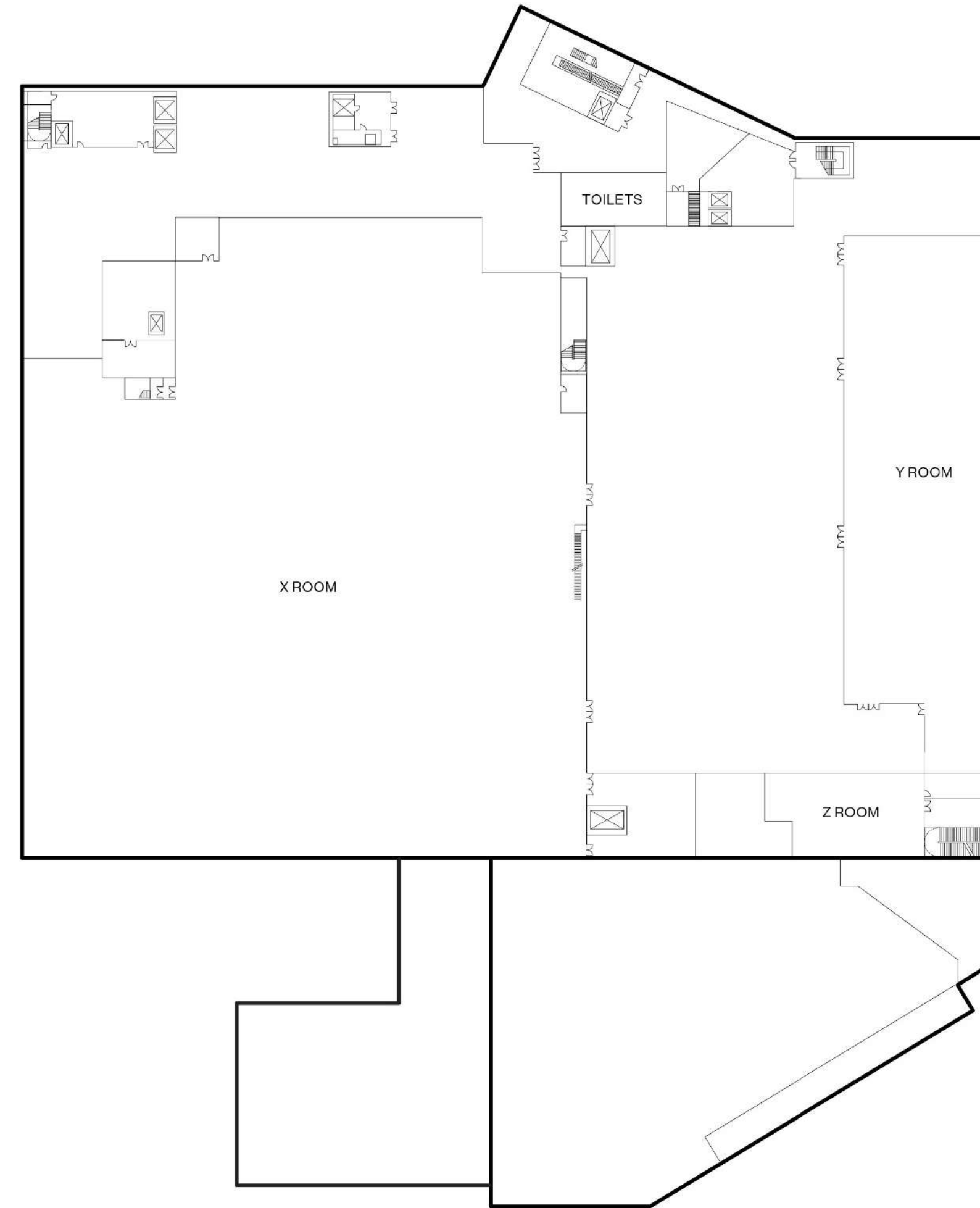


# GROUND FLOOR



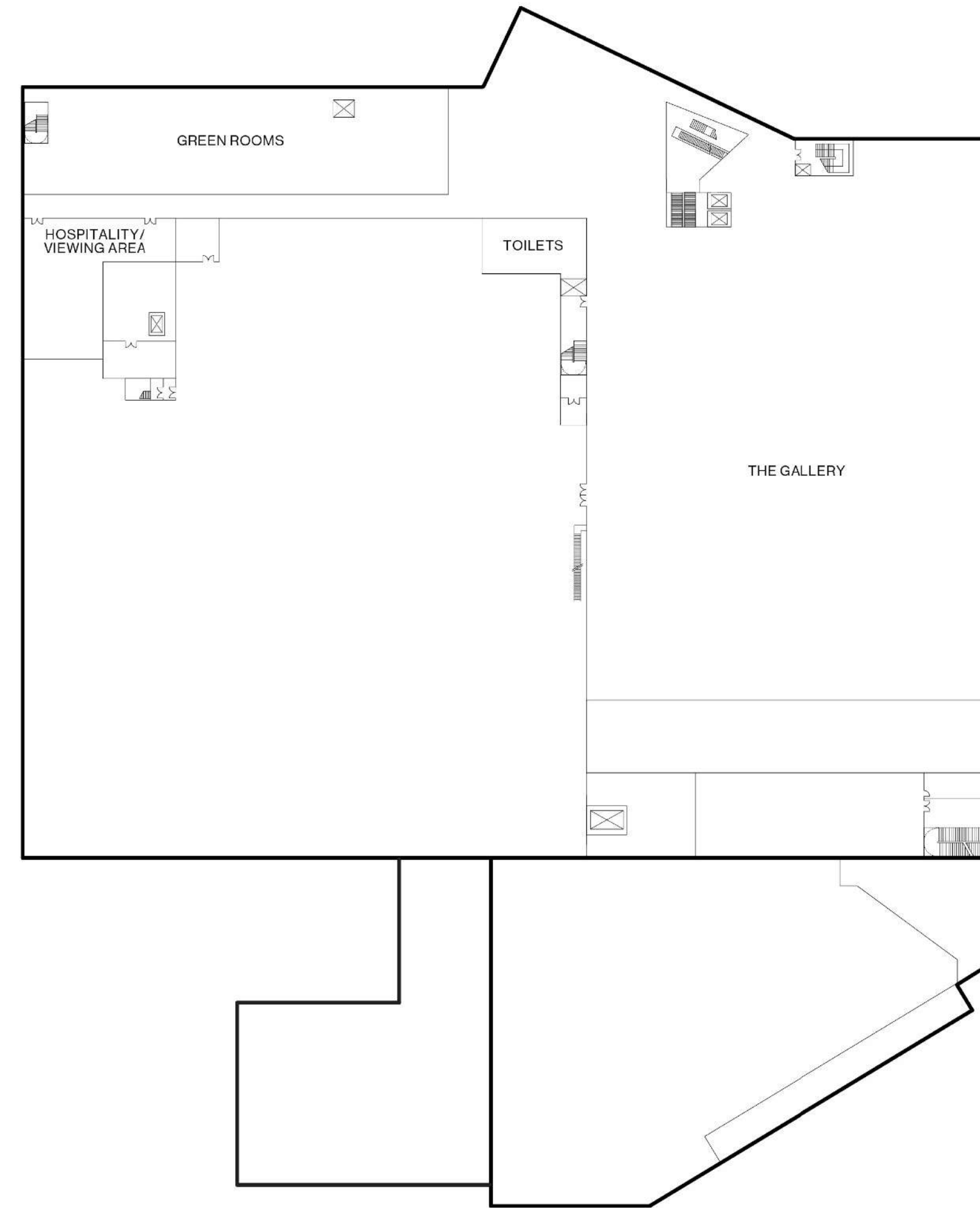


# FIRST FLOOR





# SECOND FLOOR





# SUPPLIERS

## PRODUCTION, RIGGING & POWER

Vibration Production

E: [Spyros.Fasegkas@vibrationproduction.com](mailto:Spyros.Fasegkas@vibrationproduction.com)

T: +447751738878  
PRINT & BRANDING

N2 Display

E: [mick.woodward@n2display.com](mailto:mick.woodward@n2display.com)  
T: 01992 440 333

## WIFI

Noba

E: [nick@noba.com](mailto:nick@noba.com)  
T: 020 34404 61

## CATERING

KERB

E: [toby@kerbevents.com](mailto:toby@kerbevents.com)  
T: 07475 348772

Moving Venue

E: [greatfood@movingvenue.com](mailto:greatfood@movingvenue.com)  
T: 020 8038 8783

Jimmy Garcia

E: [events@jimmygarciacatering.com](mailto:events@jimmygarciacatering.com)  
T: 020 7998 3676





# FAQS

## QUOTES

Our team provides hire fees and indicative additional charges, which include cleaning, security, event marshals, building manager, medical cover, and health & safety.

## PRODUCTION

Handled in-house by Vibration Design & Production.

## EXTERNAL SUPPLIERS?

Please get in touch with your venue contact if you wish to use an external supplier, subject to venue approval.

## POWER

Readings will be taken pre and post event.

## WI-FI

Obtain a quote through NOBA.

## LICENSING

Adherence to the venue's noise management plan is required, with music details submitted and charged per standard PRS rates.

## WASTE REMOVAL

To be managed by the hirer to avoid extra charges.

## DAMAGE DEPOSIT

From £10,000 required, refundable post-event if no damages and all invoices are settled.

## PARKING

Drumsheds offers multiple external spaces that can be hired for shoots, unit bases and production parking. There is no guest parking on site. Limited spaces are available for Blue Badge holders, if required, please discuss with your venue contact.



# GETTING HERE

## LOCATION

Drumsheds is located in N18, Tottenham.

## ADDRESS

6 Glover DR, London N18 3HF

## SHUTTLE SERVICES + RAIL

Option for convenient shuttle bus services to and from Drumsheds to Tottenham Hale.

## BUS

Bus routes 192 (running from Tottenham to Enfield) and 341 (running from Waterloo station to Meridian Water station) stop near the venue.

## AIRPORTS

- City Airport (28 minutes drive)
- London Stansted Airport (36 minutes)
- Heathrow Airport (1 hour drive)



# WANT TO GET IN TOUCH?

HIRE@DRUMSHEDSLONDON.COM  
DRUMSHEDSLONDON.COM  
6 GLOVER DR, LONDON N18 3HF

INSTAGRAM  
LINKEDIN  
FACEBOOK