



DRUMSHEDS

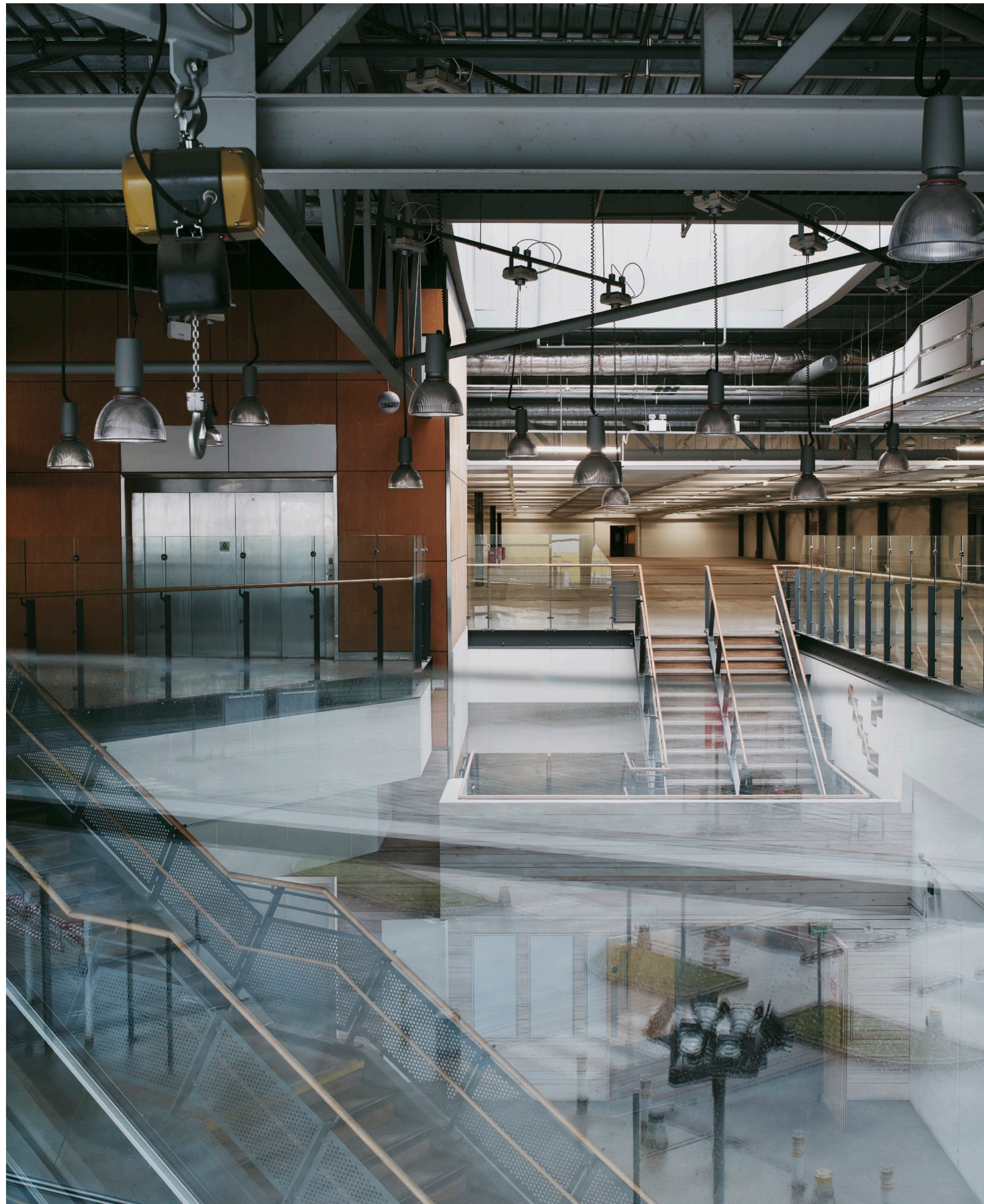


**UNCONFINED SPACE,
LIMITLESS POSSIBILITIES**

DRUMSHEDS DOES THINGS A LITTLE BIT DIFFERENTLY, AND IN AN UNASHAMEDLY MASSIVE WAY.

ABOUT

US



Drumsheds is a hybrid, multi-level, multi-room hire space, set in a disused industrial warehouse in North London - this is the first dedicated culture space of this scale and kind.

Drumsheds is a unique space for all. Reimagined from unused warehouses, it breaks free from the constraints of traditional spaces with a blank canvas design and state-of-the-art infrastructure. A place without walls, where nothing is fixed. Festivals, large-scale entertainment, private parties, fashion, conferences and exhibitions, set builds, filming, photography, product launches, and brand activations: something for every community and every niche.

Unlike other London spaces, Drumsheds has never been used for events or filming before, making it a fresh and exciting location. The space provides room for culture to thrive and the functional layout allows for the creation of distinct areas, delivering a unique experience for guests.

THE SPACES

X ROOM

The Main Space of Drumsheds: X-Room is one of the largest warehouse spaces in London. A raw, rare, industrial space. Soaring ceilings. Sprawling floors. 109,813 sq ft of versatile, hybrid and multi-functional venue space that can accommodate up to 15,000 people and a variety of large-scale activations, all with an in-house stage, PA and rigging, and dressing rooms. A new definition of freedom.







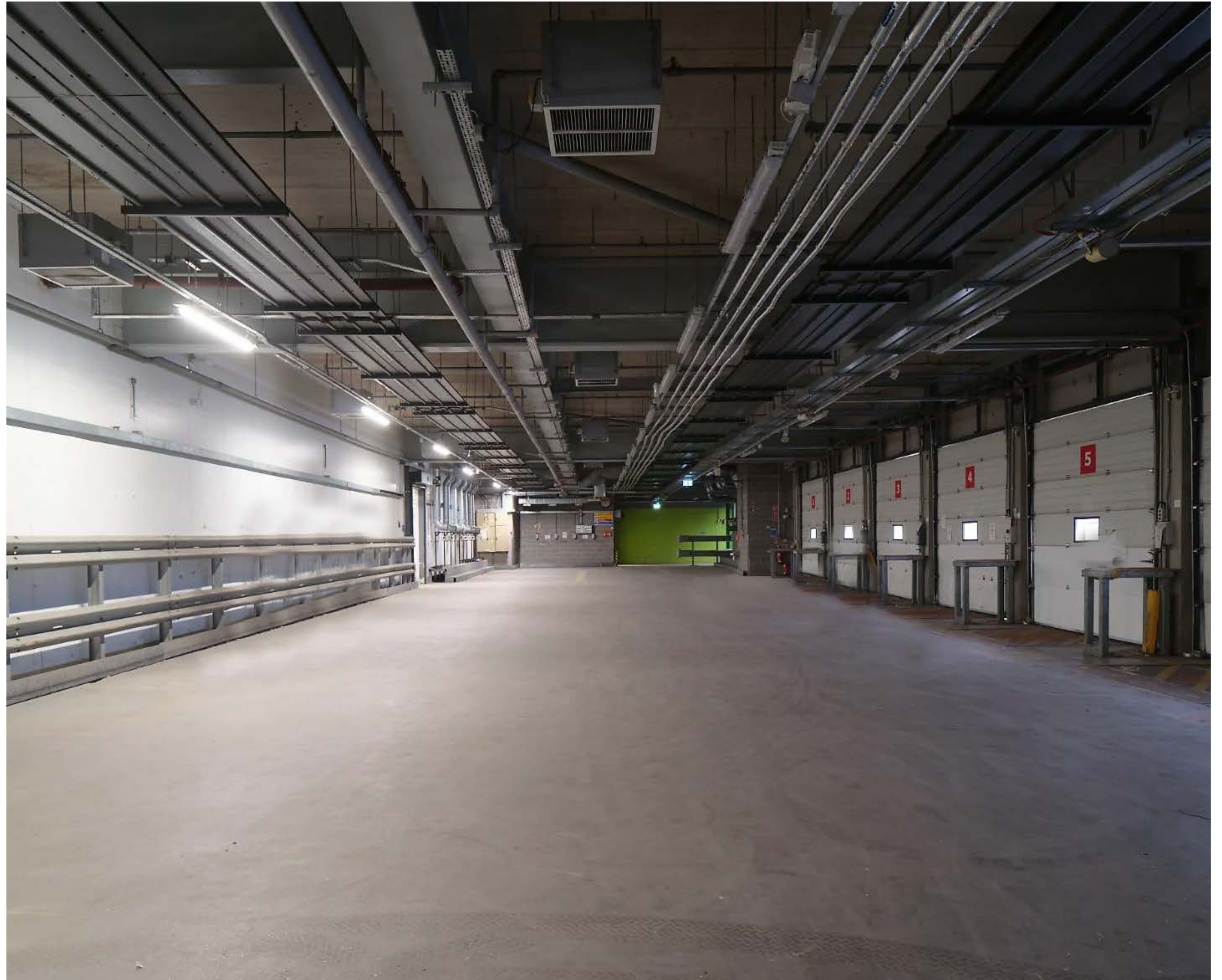
Y ROOM

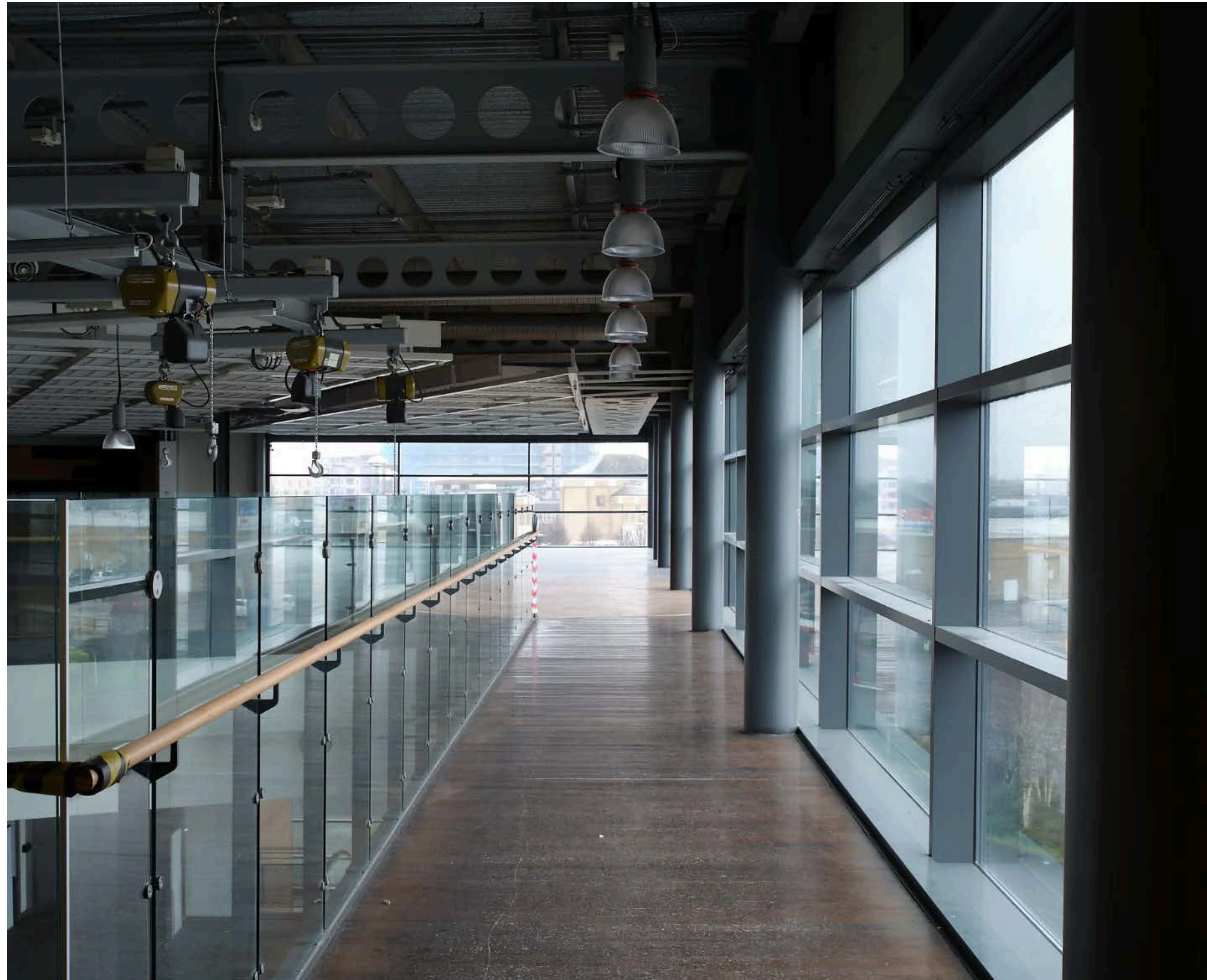
Drumsheds Second Space: Y-Room can accommodate a capacity of 5,000. Slightly smaller boundaries, same raw, industrial feel. The space boasts a flexible layout and a range of facilities, including a stage, PA system, power, and rigging systems. It is perfect for standalone, ticketed culture and music right through to fashion shows, filming or something else entirely. Whatever you're into, this room will redefine it.



Z ROOM

Drumsheds is all about size, but that doesn't mean it can't do intimacy. Z-Room is where things get up close and personal - with a capacity of 1,000. Offering a smaller, more intimate space, the room provides an excellent connector between the other two spaces. Equipped with power, and rigging systems, this area is perfect for more exclusive events or functions requiring a more intimate atmosphere.





THE GALLERY

A large 5,000-capacity area located on the second level of Drumsheds, The Gallery is the perfect space for all hire types and as an additional hire to rooms X, Y and Z. At 66,456sq ft it is the perfect blank canvas space. Facilities include full power and rigging.



GROUND LEVEL

A large multipurpose undercover ground level space suitable for all hire types and a perfect area to compliment hire of The Yard, permitting for all weather types. Ideal for festivals, food markets, filming and exhibitions.

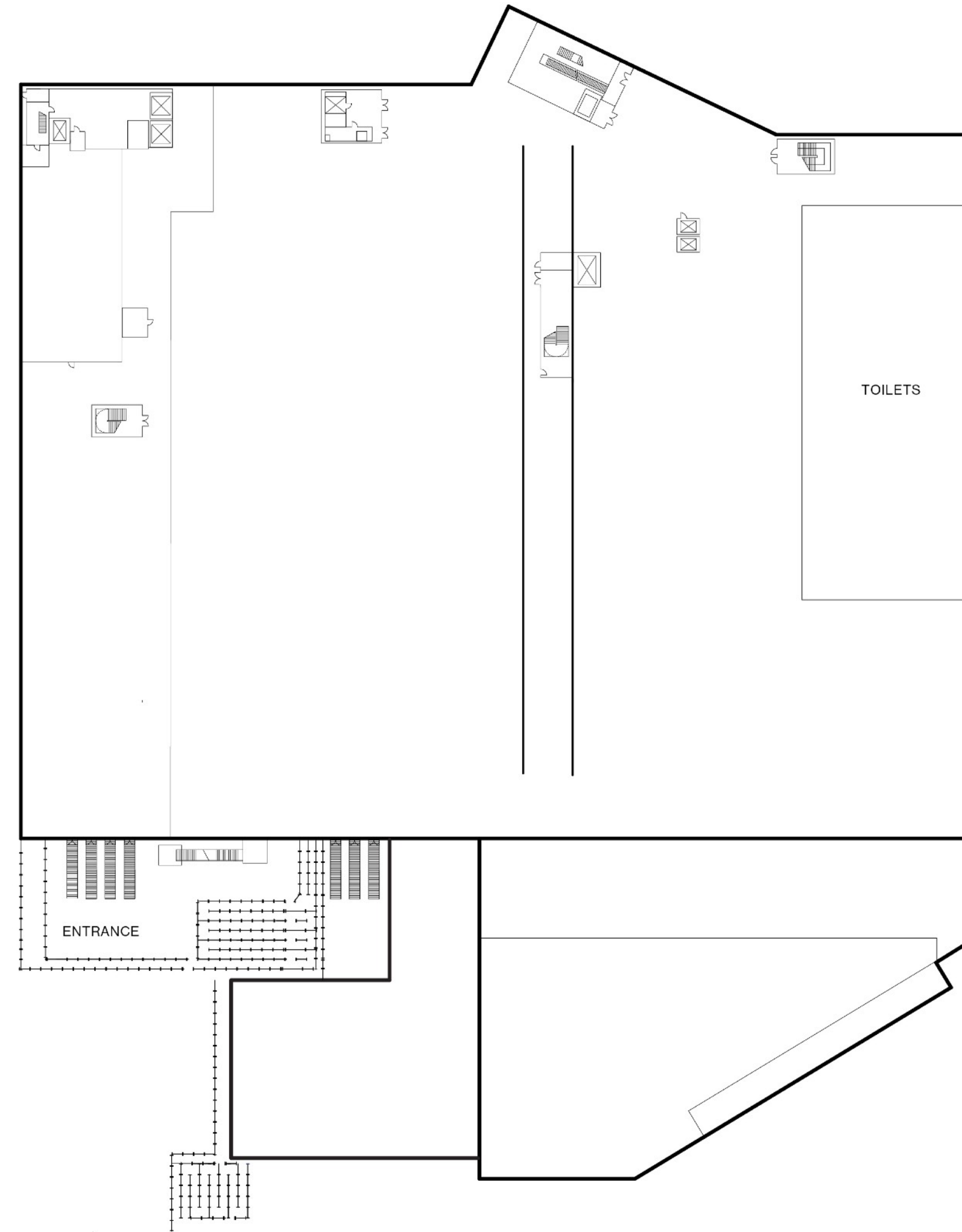


THE YARD

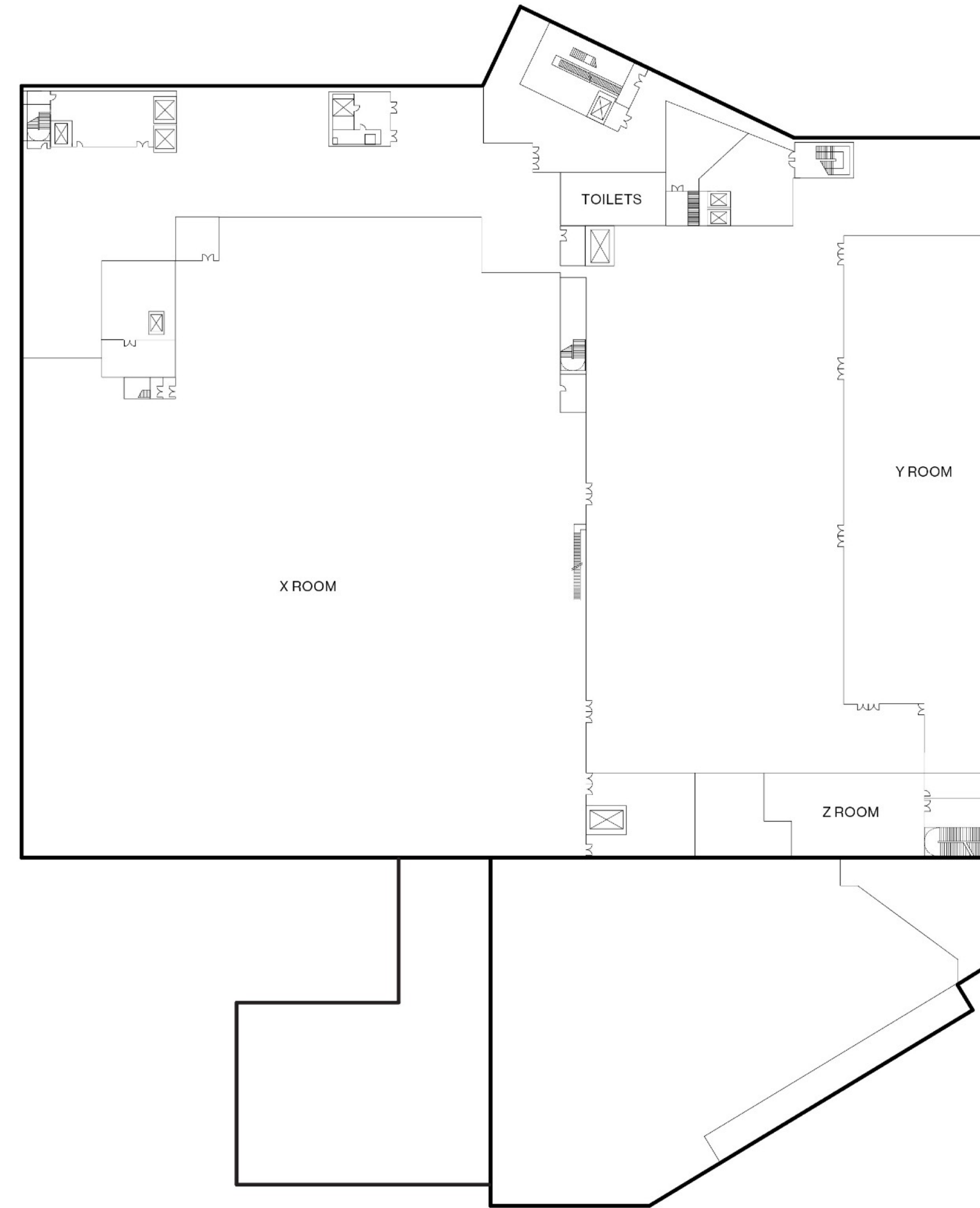


The Yard is Drumsheds' dedicated outdoor events space, with direct access to the interior spaces of the venue. The perfect space to host events such as festivals, summer parties and street food markets.

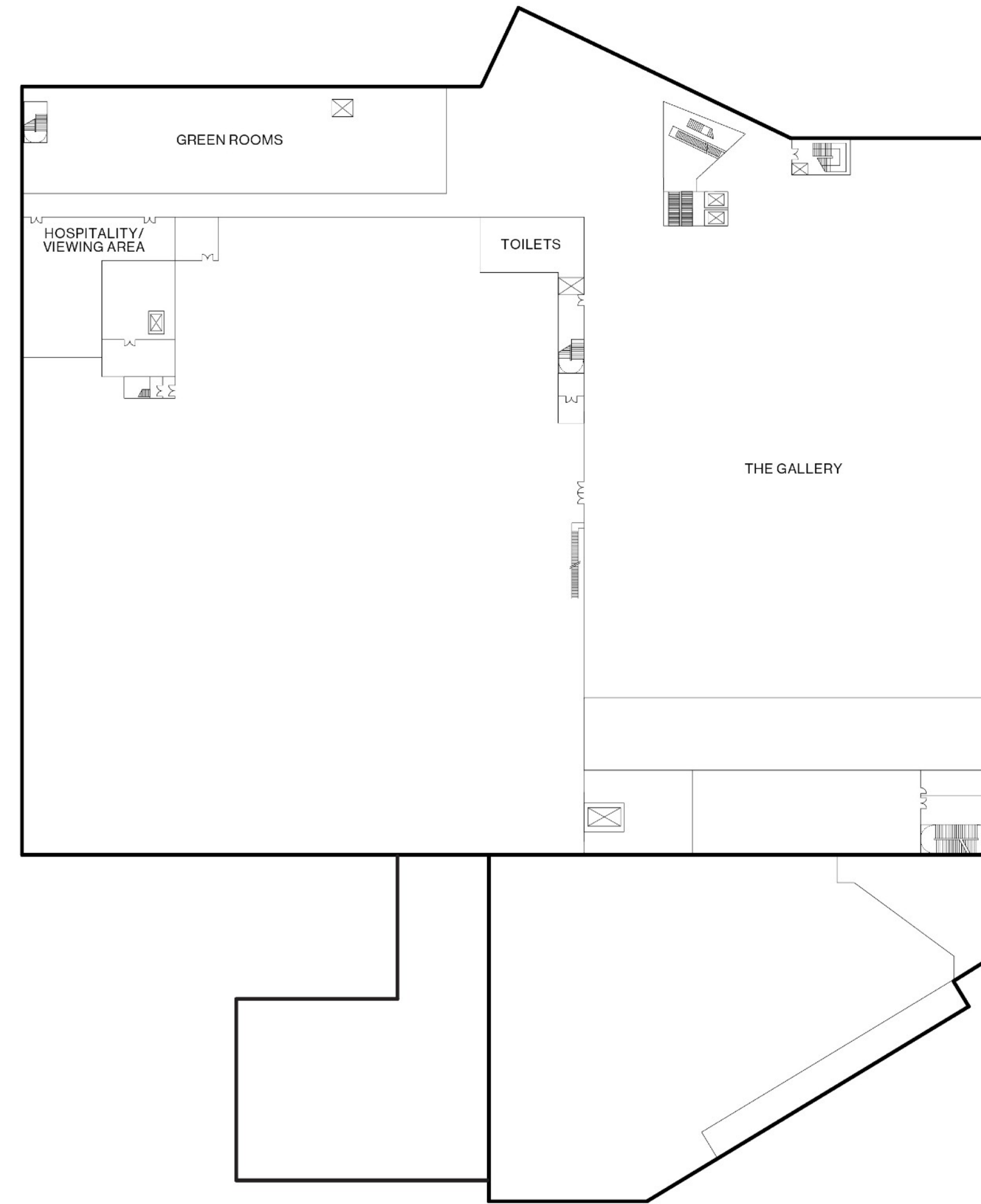
GROUND FLOOR



FIRST FLOOR



SECOND FLOOR



GETTING HERE

LOCATION:

Drumsheds is located in N18, Tottenham. Multi-cultural. Green. Community-minded.

ADDRESS:

[6 Glover DR, London N18 3HF](#)

TUBE & RAIL:

5-minute drive - Tottenham Hale
5-minute walk - Meridian Water

BUS:

Bus routes **192** (running from Tottenham to Enfield) and **341** (running from Waterloo station to Meridian Water station) stop near the venue.

AIRPORTS:

City Airport (28 minutes drive)
London Stansted Airport (36 minutes)
Heathrow Airport (1 hour drive)

WANT TO GET IN TOUCH?

HIRE@DRUMSHEDSLONDON.COM
DRUMSHEDSLONDON.COM
6 GLOVER DR, LONDON N18 3HF

INSTAGRAM
LINKEDIN
FACEBOOK